



ICON.S 2025 WINTER/SUMMER SCHOOL For Junior Scholars

+ COMPARATIVE CONSTITUTIONAL LAW ROUNDTABLE

Sydney, Australia
14–23 May 2025



MANOS
FOUNDATION



 **Universität
Münster**



Northwestern | **PRITZKER**
SCHOOL OF LAW



Centre for Asian Legal Studies
Faculty of Law

CCPL
CENTRE FOR COMPARATIVE
AND PUBLIC LAW
比較法與公法研究中心
an independent legal scholarship and education

WEDNESDAY

14 MAY

Participants Arrival

5-7pm

Welcome Drinks & Registration



The Lounge
UNSW Library (F21), Level 11

At 4:30pm, organizers of the Summer School will meet participants at The Alison to provide guidance to the venue. Another person will be at UNSW Gate 8 at 4:50pm to meet and guide participants to the venue.



THURSDAY

15 MAY

DAY 1

9-11am

Welcome and Introductions

Welcome and acknowledgment of country
Introduction of participants & facilitators



Level 2 Adrian Cameron Room, UNSW Faculty of Law and Justice

11-11:30am

Morning Tea

11:30-1pm

Session A

Types of Projects

Facilitator:

- Rosalind Dixon, UNSW



Level 2 Adrian Cameron Room, UNSW Faculty of Law and Justice

1-2pm

Lunch

2–3:30pm	Session B Case Selection Principles Facilitator: <ul style="list-style-type: none"> Rosalind Dixon, UNSW 📍 Level 2 Adrian Cameron Room, UNSW Faculty of Law and Justice
----------	---

3.30–4pm **Afternoon Tea**

4–5pm	Session C Productivity hacks Facilitators: <ul style="list-style-type: none"> Paulina Milewska, EUI Rosalind Dixon, UNSW Gustavo Buss, UFPR 📍 Level 2 Adrian Cameron Room, UNSW Faculty of Law and Justice
-------	--

FRIDAY
16
MAY

DAY 2

9:30–11am	Session D Publishing Facilitators: <ul style="list-style-type: none"> Rosalind Dixon, UNSW Gautam Bhatia, Jindal, Delhi Bar Taís Penteado, Yale Law School Chair: <ul style="list-style-type: none"> Rosalind Dixon 📍 Level 2 Adrian Cameron Room, UNSW Faculty of Law and Justice
-----------	--

11–11:30am **Morning Tea**


11:30am–12:30pm	Session E Policy Engagement Facilitator: <ul style="list-style-type: none"> Rosalind Dixon, UNSW 📍 Level 2 Adrian Cameron Room, UNSW Faculty of Law and Justice
-----------------	---

12:30–1:30pm **Lunch**

1:30–3pm	Session F Blogs and Engagement Facilitators: <ul style="list-style-type: none"> • Gautam Bhatia, Jindal, Delhi Bar • Elisabeth Perham, UNSW • Janina Boughey, UNSW (online) Chair: <ul style="list-style-type: none"> • Elisabeth Perham, UNSW  Level 2 Adrian Cameron Room, UNSW Faculty of Law and Justice
----------	---


3–3:30pm

Afternoon Tea

3:30–4:30pm	Session G How to do a poster Facilitators: <ul style="list-style-type: none"> • Daniel Boguea, UNSW • Surbhi Karwa UNSW  Level 2 Adrian Cameron Room, UNSW Faculty of Law and Justice
-------------	---

6–8pm

Junior scholar (only) dinner

 The DOG Hotel, Beer Garden,
2 St Marks Rd, Randwick NSW 2031

SATURDAY
17
MAY

Free day

SUNDAY
18
MAY

5–7pm	Women's Reception  Rosalind Dixon's Residence
-------	--

9:30–10:30am	<p>Session H Building an inclusive academy Facilitators:</p> <ul style="list-style-type: none"> • Rosalind Dixon, UNSW • Stefano Osella, HKU • Shreya Atrey, University of Oxford • Victoria Miyandazi, University of Nottingham <p>Chair:</p> <ul style="list-style-type: none"> • Rosalind Dixon <p> Level 2 Adrian Cameron Room, UNSW Faculty of Law and Justice</p>
10:30–11am	Morning Tea
11am–12:30pm	<p>Session I Career planning Facilitators:</p> <ul style="list-style-type: none"> • Ran Hirschl, University of Toronto (online) • Vanessa MacDonnell, University of Ottawa (online) • Shreya Atrey, University of Oxford <p>Chair:</p> <ul style="list-style-type: none"> • Rosalind Dixon, UNSW <p> Level 2 Adrian Cameron Room, UNSW Faculty of Law and Justice</p>
12:30–1:30pm	Lunch
1:30–3pm	<p>Session J Constitutional theory Facilitator:</p> <ul style="list-style-type: none"> • Oran Doyle, Academia Sinica Taiwan (online) <p>Chair:</p> <ul style="list-style-type: none"> • Carlos Bernal-Pulido (University of Dayton and Macquarie University) <p> Level 2 Adrian Cameron Room, UNSW Faculty of Law and Justice</p>
3–3:30pm	Afternoon Tea

3:30–5pm

Session K

Mentoring, networking and conferencing

Facilitators:

- Gustavo Buss, UFPR
- Taís Penteado, Yale Law School
- Paulina Milewska, EUI

Chair:

- Rosalind Dixon

📍 Level 2 Adrian Cameron Room, UNSW Faculty of Law and Justice

5–6pm

Book Launch and drinks

Gautam Bhatia, *The Indian Constitution: A Conversation with Power*

Commentator

- Aishwarya Singh, UNSW

Chair

- Douglas McDonald–Norman, UNSW

📍 Level 2 Adrian Cameron Room, UNSW Faculty of Law and Justice

TUESDAY
20
MAY

DAY 4

9:30–11am

Session L

Academic setbacks, structural challenges, feedback and resilience

Facilitators:

- Dian Diana Binti Abdul Hamed Shah, National University of Singapore
- Victoria Miyandazi, University of Nottingham
- Dinesha Samararatne, University of Colombo
- Rachael Walsh, Trinity

Chair:

- Shanil Wijesinha, UNSW

📍 Level 2 Adrian Cameron Room, UNSW Faculty of Law and Justice

11–11:30am

Morning Tea

11:30–1pm	Session M: Historical Methods Session M.1: History and Constitutional Law Facilitator: <ul style="list-style-type: none"> • Will Partlett, University of Melbourne Chair: <ul style="list-style-type: none"> • Surbhi Karwa, UNSW 📍 Level 2 Adrian Cameron Room, UNSW Faculty of Law and Justice
1–2pm	Lunch
2–3:30pm	Session M.2: Historical institutionalism Facilitators: <ul style="list-style-type: none"> • Theunis Roux, UNSW • Elizabeth Hicks, University of Melbourne Chair: <ul style="list-style-type: none"> • Shanil Wijesinha, UNSW 📍 Level 2 Adrian Cameron Room, UNSW Faculty of Law and Justice



WEDNESDAY
21
MAY

DAY 5

9:30–11am	Session N Ethnographic methods Facilitator: <ul style="list-style-type: none"> • Whitney Taylor, San Francisco State University Chair: <ul style="list-style-type: none"> • Daniel Boguea, UNSW 📍 Level 2 Adrian Cameron Room, UNSW Faculty of Law and Justice
11–11:30am	Morning Tea

11:30–1pm

Session M

Critical Theory

Facilitators:

- Marcela Prieto, USC Gould (online)
- Stefano Osella, HKU
- Shreya Atrey, University of Oxford
- Dinesha Samararatne, University of Colombo

Chairs:

- Surbhi Karwa, UNSW
- Aishwarya Singh, UNSW

📍 Level 2 Adrian Cameron Room, UNSW Faculty of Law and Justice

Free time and poster preparation

5pm

Deadline to submit poster ([link here](#))



THURSDAY

22

MAY

DAY 6

PARALLEL SESSIONS

Each session will comprise 2-3 papers from junior scholars, accompanied by two commentators and 1 senior scholar serving as the chair. On Wednesday (21 May), participants will receive an email detailing the panel where they are designated to present their projects and the panels where they will serve as commentators. The allocation will be determined by the participants' expertise and the theme of their project. Outlines must be uploaded [here](#) no later than Tuesday, 20th May, 5pm.



Level 2 Adrian Cameron Room, UNSW Faculty of Law and Justice

Level 2 Boardroom, UNSW Faculty of Law and Justice

8:30-9:30am	Mentor Catch-Up & Coffee	
9:30-10am	Welcome and information	
10-11am	Senior Junior scholar Session Papers: Taís Penteado, Yale Law School; Gustavo Buss, UFPR; Virginia Lemme, University of Siena Commentators: Daniel Boguea, UNSW & Surbhi Karwa, UNSW Chair: Rosalind Dixon	
11am-12pm	Parallel Session 1	Parallel Session 2
12-12:15pm	Morning Tea	
12:15-1:15pm	Parallel Session 3	Parallel Session 4
1:15-2pm	Lunch	
2-3pm	Parallel Session 5	Parallel Session 6

3-3:30pm	Afternoon tea	
3:30-4:30pm	Parallel Session 7 ■	Parallel Session 8 ■
4:30-5:30pm	Book Launch and drinks ■ Whitney Taylor, <i>The Social Constitution</i> Commentator <ul style="list-style-type: none"> • Carlos Bernal-Pulido (University of Dayton and Macquarie University) • Victoria Miyandazi, University of Nottingham Chair <ul style="list-style-type: none"> • Sinethemba Memela, UNSW 	
6:30-8:30pm	Conference dinner 📍 Lebanon and Beyond 3/187 Alison Rd, Randwick NSW 2031	




FRIDAY
23
MAY

DAY 1

COMPARATIVE CONSTITUTIONAL ROUNDTABLE

All Winter/Summer School participants are invited to attend the Roundtable. Selected junior scholars will be asked to act as chairs/commentators for the sessions based on relevant research expertise. All papers for the conference should be uploaded to this folder ([here](#)) no later than Monday, May 20. They should also be no more than 3 pages in length, or else, a full paper but with 3 pages highlighted for close reading.

 Level 2 Adrian Cameron Room, UNSW Faculty of Law and Justice

9-10:15am	Session 1 Papers: Dian Diana Binti Abdul Hamed Shah, National University of Singapore; Elisabeth Perham, UNSW Commentators: Shreya Atrey, Oxford & Junior scholar Chair: Junior scholar
10:15-10:30am	Morning tea
10:30-11:45am	Session 2 Papers: Victoria Miyandazi, University of Nottingham; Maame Yaa Akyiaa Mensa-Bonsu, University of Ghana Commentators: Cathi Albertyn & Junior scholar Chair: Junior scholar
11:45am-12pm	Coffee break
12-1:15pm	Session 3 Papers: Shreya Atrey, University of Oxford; Gautam Bhatia, Jindal, Delhi Bar Commentators: Victoria Miyandazi, University of Nottingham & Junior scholar Chair: Rosalind Dixon, UNSW & Junior scholar
1:15-2pm	Lunch and poster presentations
2:30-3:45pm	Session 4 Papers: Will Partlett, University of Melbourne; Rosalind Dixon, UNSW; Rachael Walsh, Trinity Commentators: Carlos Bernal-Pulido, University of Dayton and Macquarie University & Junior scholar Chair: Junior scholar

3:45-4:15pm	Afternoon tea
4:15-5:30pm	Session 5 Papers: Whitney Taylor, San Francisco State University; Carlos Bernal-Pulido, University of Dayton and Macquarie University; Stefano Osella, HKU Commentators: Gautam Bhatia, Jindal, Delhi Bar & Junior scholar Chair: Junior scholar
5:30-6pm	Graduating Ceremony and Closing Remarks



2025 ICON•S WINTER/SUMMER SCHOOL FOR JUNIOR SCHOLARS

PARTICIPANTS

Fernando Romani Sales

Tadesse Melaku Asfaw

Hilary Hogan

Josep Maria Tirapu Sanuy

Sofía Reca Milanta

Juan Carlos Bautista

Zuzanna Nowicka

Hernán Gómez Yuri

Anna Wójcik

Benjamin Christy

Pía Macarena Chible Villadangos

Michal Kovalcik

Chong Bu

Mihika Poddar

Javi Moreno

Oscar Sang

Adrija Ghosh

Mariana Brocca

Yinn-ching Lu

Jirong Yu

Joshua Malidzo Nyawa

ABOUT YOUR ACCOMMODATION



📍 Address: 136 – 138 Alison Road, Randwick, NSW 2031
📞 Phone: +61 2 9399 3883
✉ Email: hello@thealisonrandwick.com

THE ALISON RANDWICK

WINTER/SUMMER SCHOOL PARTICIPANTS CHECK-IN

Wednesday, May 14th, 2024, after 2:00pm

WINTER/SUMMER SCHOOL PARTICIPANTS CHECK-OUT

Saturday, May 24th, 2024, before 10:00am

RECEPTION OPERATING HOURS

Guest Services is open from 8am to 5pm, 7 days a week. Should you be arriving after-hours please contact Tam Allenby (t.allenby@unsw.edu.au or +61411463754) for After Hours Check-in instructions.

LUGGAGE STORAGE

Should you arrive earlier than the standard 2:00pm check-in time the hotel guest services team will be there to greet you and assist with the storage of luggage.

HOW TO GET TO THE ALISON RANDWICK FROM THE AIRPORT

By Bus: There are handy busses that do run regularly from both the Domestic and International Airports. Follow in-airport signage to be directed towards the bus terminals. This option will see you arrive at the hotel in 45-60 minutes depending on traffic.

By Taxi/Uber: This option will see you arrive to The Alison within 20-30 minutes, traffic depending. For Taxi's you will find signs within the airport that will direct you to the taxi ranks. Uber collection can be arrange with your driver so that they collect you from the designated priority pick-up area.

COOKING FACILITIES

The Alison offers a basic cooking facilities in a communal kitchenette area available for all guests. You will find a toaster, microwave and basic cooktop and utensils for guest use 24/7.

PUBLIC TRANSPORT

The Alison is conveniently located close to Belmore Road which offers bus transport through to all the major transport hubs of the Eastern Suburbs, Bondi Junction and the city. This is a 10 minute walk from the hotels door. The Alison is located just a few minutes walk from the Sydney Light Rail. You can take the light rail all the way to Circular Quay, or change at Moore Park to travel to Central, Chalmers Street.

HOUSEKEEPING

Housekeeping is provided after every 2nd night of stay. This includes a full replenishment of amenities and fresh towels. Guests staying longer than 4 nights will be arranged a full linen change, and thereafter relative to their length of stay. For additional housekeeping requests, please contact the hotel staff.

WHAT DOES SHARED BATHROOM MEAN?

Guests have access to shared bathrooms that are conveniently located through out the property. Each bathroom contains one restroom and a shower.

LAUNDRY

The Alison provides a shared laundry facility for guests to use when needed for an additional cost.

PLAN YOUR TIME IN SYDNEY

USEFUL LINKS:

- [AUSTRALIA TOURISM WEBSITE](#)
- [VISITOR'S GUIDE TO SYDNEY](#)
- [SYDNEY CULTURE WALKS](#)
- [WHAT'S ON IN SYDNEY](#)
- [DESTINATION NSW](#)

GETTING AROUND SYDNEY



Sydney has an extensive public transport system of buses, trains, metro rail, light rail and ferries. To use the network, you'll need to either purchase an [Opal card](#) or use a contactless credit card, debit card or mobile device. Plan your trip [here](#).



Tap your Opal card on the reader when you board your selected mode of transport, and be sure to tap the reader again when you disembark.



GETTING AROUND AT NIGHT

Most trains stop running from midnight to 4:30am. Replacement NightRide buses stop near stations along the train line. Taxis are available anytime, any day, with secure taxi stands all over town. Taxi driver shifts may end around 3am and 3pm, so there may be a slight delay around these times. Visit transportnsw.info for more information. Many people also use Uber & Didi.

SYDNEY

TOP SIGHTS



SYDNEY OPERA HOUSE One of the world's great icons, the Sydney Opera House is a UNESCO World Heritage Site and the star attraction on the glittering harbor. This graceful building, shaped like shells or billowing sails, perches on a finger of land surrounded by water.

 [GOOGLE MAPS](#)  [WEBSITE](#)



ROYAL BOTANIC GARDEN SYDNEY Established in 1816, the gardens are Australia's oldest botanic garden. They encompass 30 hectares of themed gardens with towering trees, palm groves, orchids, ferns, succulents, tropical gardens, rainforest plants, herbs, and Oriental gardens.

 [GOOGLE MAPS](#)  [WEBSITE](#)



SYDNEY HARBOUR BRIDGE The Sydney Harbour Bridge is one of the world's most recognisable landmarks. Not only is it the largest steel arch bridge on the planet, but it also spans one of the globe's finest natural harbours. Affectionately named the 'Coathanger' by locals, it's an intrinsic part of the city; you can walk or cycle across it and even climb to its peak for incredible views.

 [GOOGLE MAPS](#)  [WEBSITE](#)



ART GALLERY OF NEW SOUTH WALES With more than 40 exhibitions annually and vast collections of Australian, Aboriginal and Torres Strait Islander, European and Asian art, there is always something new to discover at the Art Gallery of New South Wales. The gallery is only a 15min walk from the city centre and admission is free, as are the daily guided tours.

 [GOOGLE MAPS](#)  [WEBSITE](#)



COASTAL WALK FROM COOGEE TO BONDI Enjoy one of Sydney's most iconic walks, taking in beautiful beaches, cliff tops and great cafes along the way. The 6km walk takes two to three hours, depending on how often you stop, but you can also allow a full day to do the walk and enjoy a swim at each of the beaches en route.

 [GOOGLE MAPS](#)  [WEBSITE](#)



CENTENNIAL PARK Centennial Park is Sydney's playground in the inner east, offering visitors 189-hectares of wide open spaces for recreation, learning and leisure. Centennial Park is home to a number of wild animals including birds, rabbits, and foxes. It is also home to a number of equestrian schools and other domestic animal endeavours.

 [GOOGLE MAPS](#)  [WEBSITE](#)

SYDNEY

TOP SIGHTS



QUEEN VICTORIA BUILDING Built in the 1890s, this grand building was beautifully restored and re-opened in 1986, quickly becoming Sydney's most prestigious shopping centre.

[GOOGLE MAPS](#) [WEBSITE](#)



BARANGAROO RESERVE Barangaroo Reserve is Sydney's newest harbourside park, rich with Aboriginal significance and maritime history. A perfect place to walk, cycle, or swim (at Marrinawi Cove C/4)

[GOOGLE MAPS](#) [WEBSITE](#)



DARLING HARBOUR / COCKLE BAY Home of the Australian Maritime Museum, SEA LIFE Sydney Aquarium, WILD LIFE Sydney Zoo, Chinese Garden of Friendship, Madame Tussauds, restaurants and bars.

[GOOGLE MAPS](#) [WEBSITE](#)



TARONGA ZOO SYDNEY Visit Taronga Zoo Sydney, a not-for-profit conservation society situated amongst lush bushland and boasting stunning views overlooking Sydney Harbour. Only a short 12-minute ferry ride from the Circular Quay. Taronga Zoo is home to over 4,000 animals from 350 species and takes approximately 3 hours to explore the entire zoo

[GOOGLE MAPS](#) [WEBSITE](#)



MANLY BEACH Manly is one of those magic beaches that has something for everyone. It spans 3km, so there's lots of space to spread your towel on the soft white sand and relax all day. Swimmers and surfers are safe knowing it's patrolled by three surf lifesaving clubs and those who prefer looking at the water rather than diving in can walk or cycle alongside it.

[GOOGLE MAPS](#) [WEBSITE](#)



THE BLUE MOUNTAINS The Blue Mountains is best known for its soaring sandstone ridges blanketed in native bushland. Nestled within the wilderness lie charming mountain towns, ancient Aboriginal rock art and the iconic tourist attraction of Scenic World. Expect to be enchanted by the natural beauty when you set out to explore the walking tracks that loop around the verdant valleys and craggy cliffs. Find after-dark excitement spotting glow worms in an underground cave, or indulge in a touch of luxury at a wilderness retreat. Whether cloaked in clouds or glowing golden in the sunset, the endless vistas of the Blue Mountains will take your breath away.

[GOOGLE MAPS](#) [WEBSITE](#)

MAPS & USEFUL INFORMATION



SYDNEY

MAP



SYDNEY

NEIGHBOURHOODS

City centre

Clustered around a glittering harbour, our city centre is dynamic and diverse, from sky-high towers and laneway bars to bustling Asian food halls and chic boutiques. Home to world-renowned major events and glamorous shopping, galleries, museums and theatres showcasing the best in local and international cultural experiences means you're spoilt for choice.

1 Chinatown and Haymarket

Feast on delicacies from across the Asian region, shop up a storm at specialty outlets and unleash your inner rock star at late-night karaoke.

2 Darling Harbour

The waterfront is the perfect backdrop for a selfie with attractions including SEA LIFE Sydney Aquarium, the Australian National Maritime Museum and Darling Square.

3 Millers Point, Walsh Bay and Barangaroo

Walsh Bay brings Australian talent to theatres, performance spaces and galleries. Neighbouring Millers Point has Sydney's richest architectural history and is the gateway to dining destinations at Barangaroo. You can also cool off with a harbour swim at Marmah Cove.

4 The Rocks

Wander down laneways hundreds of years old, raise a glass at some of the oldest pubs in the country and grab a bite to eat with million-dollar views.

Inner east

Inner-city cool meets refined urban style in this part of Sydney that embraces individuality, diversity and creativity. Explore one-of-a-kind shops, trend-setting cafes, restaurants and bars, chic boutiques and classic art deco architecture.

8 Paddington

Galleries made to spend hours in, boutiques stocked with the finest threads and restaurants with decadent menus.

9 Darlinghurst

From the bustle of Little Italy, a treasure trove of op shops and cool small bars to Sydney's LGBTQIA+ heartland Oxford Street.

10 Kings Cross, Potts Point and Woolloomooloo

A bohemian cool late-night destination with perfectly preserved architecture, chic boutiques, exceptional eateries and cool cocktail bars to take you from day to night.

11 Surry Hills

A vintage lover's heaven where hipsters, shoppers and bar hoppers bounce between organic cafes, eateries and funky bars.

Inner south

With a rich and gritty industrial past, this area is emerging as an epicentre for arts ventures, grassroots dining venues and creative entrepreneurs.

12 Chippendale

The go-to destination for art lovers. Hosting a growing number of independent, highly acclaimed art spaces. Kensington Street and Spice Alley are a must for coffee lovers and serious foodies.

13 Alexandria, Rosebery and Green Square

Sydney's oldest industrial heartland is transforming into one of the city's most funky areas. Indulge at one of the many eateries before snapping up something amazing from local clothing shops and homewares stores.

14 Redfern & Waterloo

With a proud Aboriginal heritage, you'll find a trove of First Nations art and culture, as well as uber-cool warehouse-style galleries, eateries and food stores.

Inner west

The ultimate in urban cool features warehouses and wharves, buzzing live music and quirky, alternative vibes.

5 Newtown

Home to indie shops, bookstores, antique outlets, cool bars and dining from all over the globe.

6 Pyrmont and Ultimo

Historic sandstone cottages and some of the city's most architecturally significant buildings sit alongside galleries hosting exhibitions you'll never want to leave.

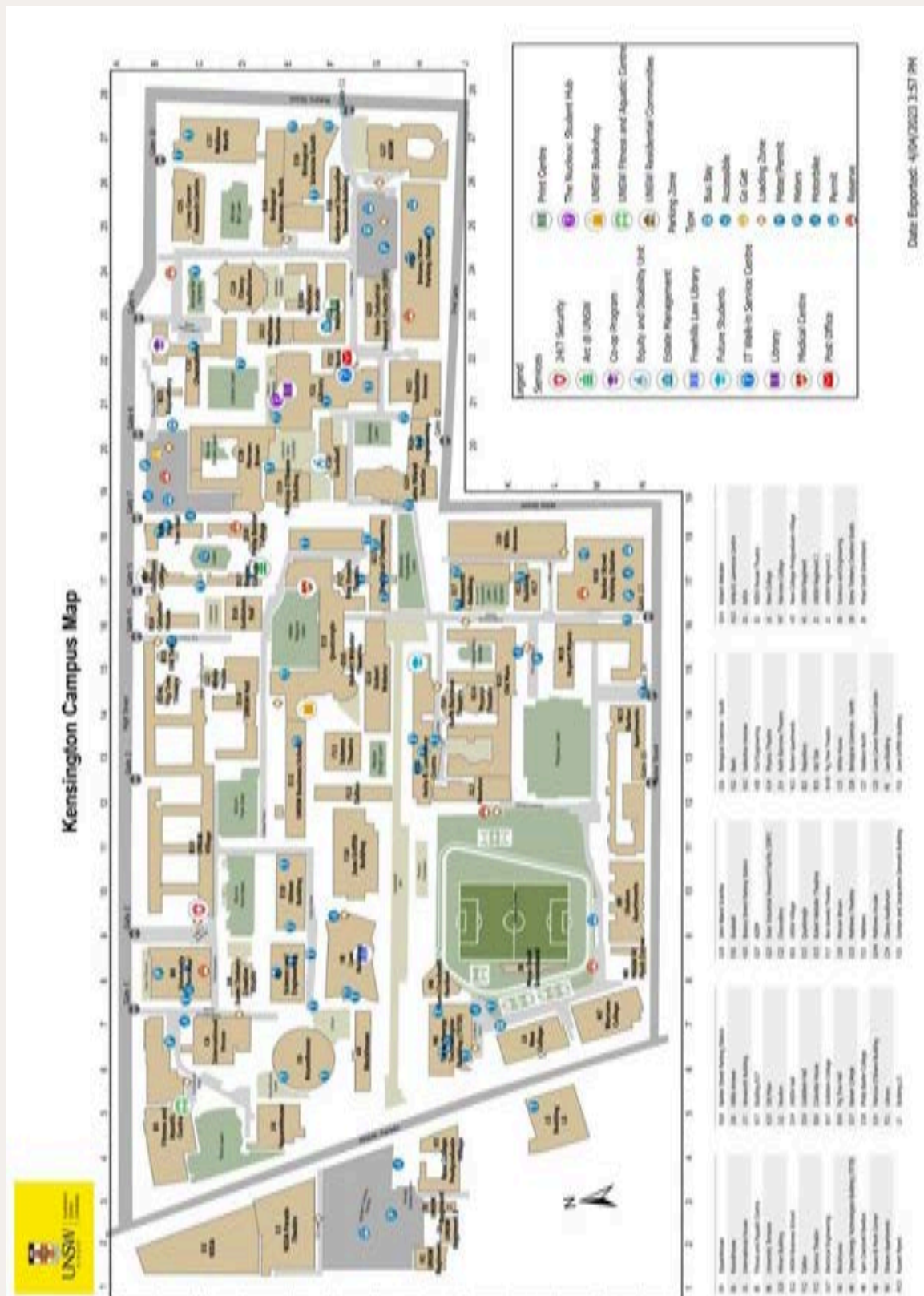
7 Glebe

Savour cuisine from a different part of the world every night of the week, have your tarot read or sip a boutique brew at an historic pub.



MAP

Acknowledgement of Country UNSW Kensington is located on the unceded territory of the Bedegal people who are the Traditional Owners of the lands where the campus is situated.





AUSTRALIA

SURVIVAL GUIDE

CURRENCY

Australian dollar (AUD) is the official currency of Australia. For current exchange [click here](#).

LANGUAGE

English

MONEY ATMs are widely available in cities and larger towns. Credit cards accepted in most hotels and restaurants.

TIME

There are 5 time zones in Australia. Sydney NSW, Australian Eastern Standard Time (GMT+10)

COVID-19 SAFETY TRAVEL INFORMATION For the latest information on COVID-19 (coronavirus) and related travel updates, [click here](#).

WEATHER

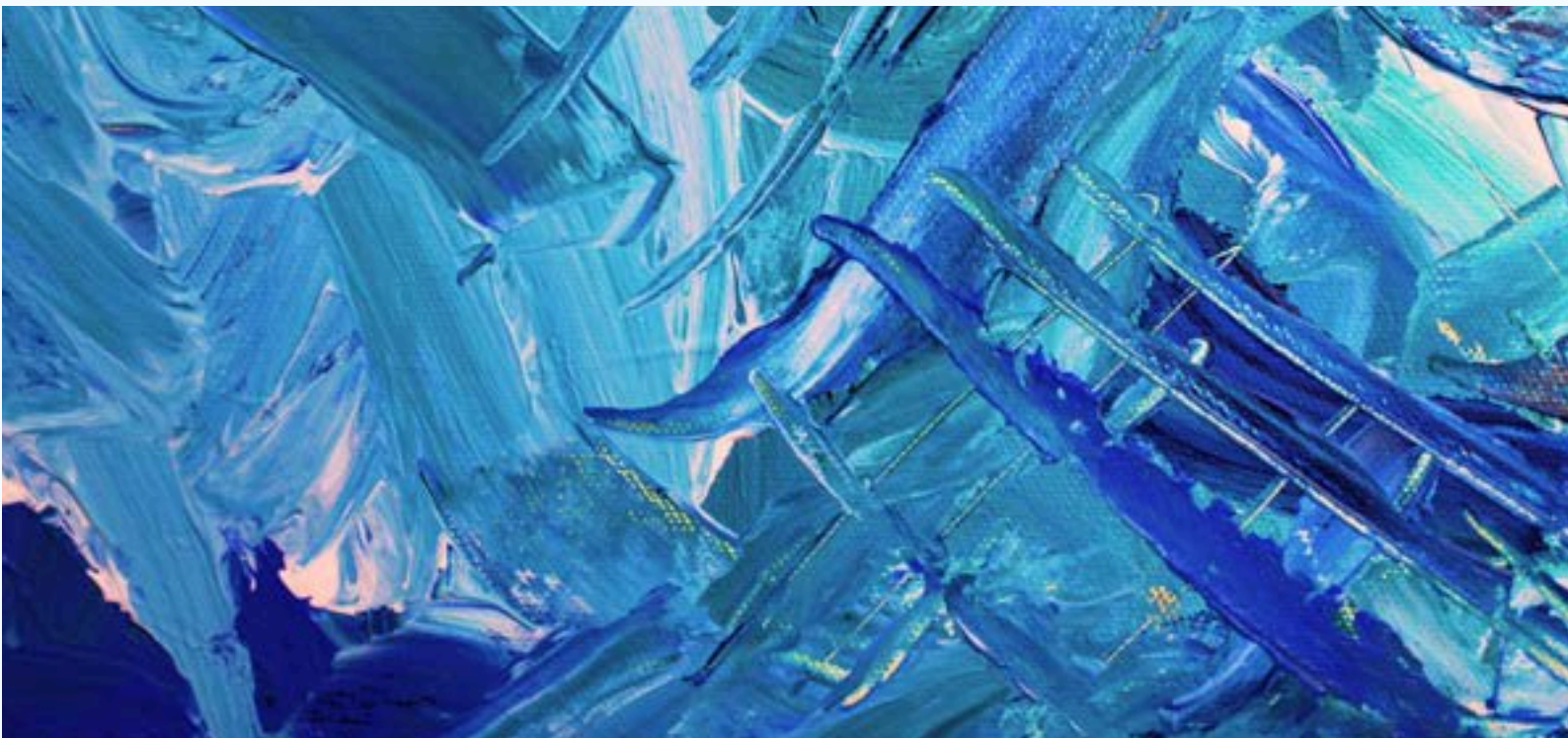
In May, Sydney, Australia experiences mild autumn weather with average temperatures ranging from 10°C to 20°C (50°F to 68°F). Days are generally sunny with occasional showers, and the humidity begins to drop as winter approaches.

ELECTRICITY

To plug yourself into the electricity supply (230V AC, 50Hz), use a three-pin adaptor (the same as in New Zealand; different to British three-pin adaptors).

EMERGENCIES

Triple Zero (000) is Australia's main emergency service number. You should call 000 if you need urgent help from police, fire or ambulance services.



MANOS
FOUNDATION



Northwestern | **PRITZKER**
SCHOOL OF LAW

