

**WellingtonNZ.com**

# Wellington

OFFICIAL VISITOR GUIDE



## CONTENTS

12 must-do experiences	2
Explore Wellington city	4
Culture capital	6
Culinary capital	16
Shopping	26
Where to stay	30
Nature's playground	36
Getting around in Wellington	42
Explore Wellington's big backyard	46
– Wairarapa	48
– Hutt Valley	54
– Kāpiti Coast	60
– Porirua	66
Useful information	72

**Imagery by** Johnny Hendrikus, Nicola Edmonds, Steve Unwin, Celeste Fontein, Flying Saucer, Colin McCahon, Michael O'Neill, Miles Holden, Te Papa Tongarewa, Jeff McEwan, Jay French, Caleb Smith, Tim Bardsley, Mike Heydon Jet Productions, Martin Haughey, Mark Tantrum, Lilia Alexander, Tessa Calogaras, Neat Places, Pivot Photography.

**Cover image:** Johnny Hendrikus

At the date of printing this guide WellingtonNZ has to the best of its knowledge been supplied with accurate and up-to-date information. This information should be used as a guide only. We recommend contacting the provider to confirm any details and to ensure they comply with all Health and Safety and regulatory requirements. WellingtonNZ shall not be held responsible for any errors or omissions printed, changes or misinformation supplied. All rights reserved. No part of this guide may be reproduced without the prior permission of WellingtonNZ.

**Produced:** January 2022

**Design:** Homegrown Creative

**Print Production:** Landau Group Ltd

**Distribution:** WellingtonNZ,

175 Victoria St, PO Box 10 017,

Wellington, New Zealand 6011

P: +64 4 916 1205

E: [Contact@WellingtonNZ.com](mailto:Contact@WellingtonNZ.com)

**DOING OUR BIT:** This document is printed on sustainable paper using vegetable based inks.



## AT THE BOTTOM OF THE WORLD AT THE WATER'S EDGE, IS A LITTLE CITY WITH A BIG HEART.

Wellington is New Zealand's compact capital city with a compelling mix of culture, history, nature, and cuisine. Fuel your days with strong coffee, wander through hidden laneways, and discover New Zealand's stories in interactive museums. Be inspired in theatres and galleries and fill your suitcase with local designs and tasty treats from the boutiques and markets. Surprise your tastebuds with equally delicious and exciting cuisine in the city's renowned restaurants, cocktail lounges, and craft beer bars. Take a day trip to the neighbouring wine region or immerse yourself in nature in the city's outdoor playground, and explore by bike, foot, kayak, or ferry.





# 12 unmissable experiences



## 1 / MOUNT VICTORIA

Get your bearings and soak up the panoramic views over the city, harbour, and hills from the top of Mount Victoria. You can drive or walk to the top of this Wellington landmark.

## 2 / GOOD FOOD

Eat your way around the culinary capital with food truck feasts on the waterfront, Malaysian eats on Cuba Street, stunning meals of local and seasonal produce, and unforgettable degustation menus.

## 3 / TE PAPA

Immerse yourself in the history of Aotearoa at our national museum. Interactive experiences take learning to a new level, and rotating exhibitions as well as the extensive permanent collection means there's always something new to see. Entry is free.

## 4 / FRESH COFFEE

Wellington is a city fuelled by coffee – and we like it strong! With around 20 roasteries and countless cafés, there's often the delicious scent of roasting coffee beans in the air.

## 5 / WATERFRONT

Go for a stroll or ride your bike along the waterfront to take in the views, see sculptures, enjoy a locally made gelato on the golden sand at Oriental Bay, and take a selfie at the colourful boatsheds.

## 6 / HANNAHS LANEWAY

This street art-lined laneway is heaven for foodies – sample award-winning Fix & Fogg peanut butter, taste Wellington Chocolate Factory's artisan bean-to-bar chocolate, grab a wood-fired pizza, and see some beer being brewed.

## 7 / WĒTĀ WORKSHOP EXPERIENCE

Get behind-the-scenes to discover movie magic and the exceptional skill of Wētā Workshop, who created the props and film effects for movies such as *The Lord of the Rings* movie trilogy, *Avatar*, and more.

## 8 / WELLINGTON ZOO

Have an unforgettable once-in-a-lifetime Close Encounter with some of the animals at Wellington Zoo, the world's first carbonZero certified zoo.

## 9 / CABLE CAR

No visit to Wellington is complete without a ride on the iconic bright red Wellington Cable Car. Stop at the top to check out the stunning views over the city and visit the Cable Car Museum.

## 10 / ZEALANDIA TE MĀRA A TĀNE

Set in an idyllic valley just 10 minutes' drive from the city, Zealanda Te Māra a Tāne is a world-first, predator-free eco-sanctuary full of New Zealand's native wildlife and beautiful regenerating bush.

## 11 / CRAFT BEER

The capital of craft beer is home to an ever-growing number of breweries creating delicious and creative brews that will refresh and challenge you in equal parts.

## 12 / WEEKEND MARKETS

Wellington has a bustling weekend market scene with markets popping up selling fresh produce, tasty drinks, and delicious kai (food) from food trucks.

# Explore

THE CITY

*Wellington is a compact city that's incredibly walkable, which makes it easy to explore – even if you only have a day here. No matter what you're interested in, you'll find a part of Wellington that's exactly your kind of place.*



## ORIENTAL BAY



There aren't many cities in the world where a picturesque, golden sand swimming beach is just a 10 minute walk from the CBD. In warmer months, Oriental Bay is the place to be for swimmers, picnickers, and sun-seekers, and a scoop of gelato enjoyed by the water is popular year-round.



## CUBA QUARTER



Wellington's most colourful and creative street is home to vintage clothing and secondhand book stores, quirky cafés, and the famous Bucket Fountain. Pick up a locally made gift from one of the many studios and galleries, and try some of the tastiest cuisine in the city from the numerous restaurants Cuba Street is known for.



## THORNDON

New Zealand's oldest suburb and home to some of Wellington's fascinating history, Thorndon is a beautiful area to explore. Take a tour of **New Zealand Parliament**, visit **Katherine Mansfield House & Garden**, the childhood home of New Zealand's most internationally famous author, and stroll around **Wellington Botanic Garden**.



## LAMBTON QUAY

The home of Wellington's best high street shopping, Lambton Quay has all your favourite brands and labels. **Old Bank Arcade** is a shopping experience not to be missed with some of New Zealand's top designers housed inside a beautiful converted historic bank.



## COURTENAY PLACE

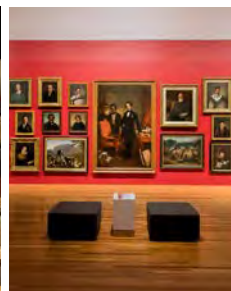
Where locals and visitors go to celebrate and have a good time, Courtenay Place is home to many of the city's theatres and venues, and where you'll find Wellington's best cocktail bars. At the top of Courtenay Place is the **Embassy Theatre**, which hosted the star-studded world premieres of *The Lord of the Rings: The Return of the King* and *The Hobbit: An Unexpected Journey*.





# Culture — capital

*You'll find plenty to inspire you in Wellington – movie-making magic and award-winning museums, world-class performing arts, Māori culture, and history and art all around the city.*



## — VISUAL ARTS

Check out cutting-edge art at **City Gallery Wellington** in **Te Ngākau Civic Square**; see the national art collection at **Te Papa's Toi Art**; experience contemporary Māori, Pacific, and New Zealand art at **Pātaka Art + Museum**; and admire design, ceramics, and art at **The Dowse Art Museum**.

## — LIVE EVENTS

There's always a live performance on offer in Wellington. Some of the country's leading arts companies call Wellington home including the **Royal New Zealand Ballet** and **New Zealand Symphony Orchestra**, as well as much-loved theatres **BATS**, **Circa Theatre**, **St James Theatre**, and **The Opera House**. See pages 8-9 for Wellington's calendar of unmissable annual events and festivals.

## — TELLING OUR STORIES

Discover the stories of Aotearoa told in interactive, ground-breaking ways at **Museum of New Zealand Te Papa Tongarewa**, and learn about Te Whanganui-a-Tara/Wellington's own fascinating history at **Wellington Museum** and **Petone Settlers Museum**. Visit **Space Place** and hear the stories of New Zealanders who have been part of space discovery.

## — MOVIE MAGIC

Get a behind-the-scenes look at **Wētā Workshop's** movie-making magic on a guided tour and see props, costumes, film effects, and more from epics like *The Lord of the Rings* trilogy and *Avatar*. Go see a movie at **Embassy Theatre**, which has hosted its share of star-studded red-carpet premieres, or **Roxy Cinema** in the heart of Wellywood. See page 10-11 for more iconic film locations in the Wellington region.

## — MĀORI CULTURE

Te Whanganui-a-Tara/Wellington has many unique Māori experiences on offer. Visit **Te Wharewaka o Pōneke** to learn how to paddle a waka (Māori canoe) and taste some food cooked in a hāngi (earth oven). See the original Treaty of Waitangi, the agreement that Aotearoa is built on, at **He Tohu** at the **National Library of New Zealand**.

Clockwise from top / Te Wharewaka o Pōneke, City Gallery Wellington Te Whare Toi, Toi Art at Museum of New Zealand Te Papa Tongarewa, Roxy Cinema

# WHAT'S ON IN WELLINGTON

## SUMMER

### JANUARY – MARCH

Free summer entertainment including, Pasifika Festival, and Chinese New Year celebrations.

#### Round the Bays

##### FEBRUARY

A fun run along the beautiful Wellington Waterfront.

#### Wellington Wine and Food Festival

##### FEBRUARY

Bringing together delicious drinks, great food, and local talent.

#### Aotearoa New Zealand Festival of the Arts

##### FEBRUARY – MARCH (EVERY TWO YEARS)

Aotearoa's largest celebration of cutting-edge culture and art.

#### New Zealand Fringe Festival

##### FEBRUARY – MARCH

Experience the unexpected at New Zealand's biggest fringe festival.

#### Performance Arcade

##### FEBRUARY

A summer festival that takes over Wellington's waterfront with free live art, music, and performances by New Zealand and international artists.

#### Māoriland Film Festival

##### MARCH

Aotearoa's premier international Indigenous film festival held in Ōtaki.

#### Jim Beam Homegrown

##### MARCH

An epic festival of homegrown Kiwi music on Wellington's waterfront.

#### 121 Festival

##### MARCH

A three-day ticketed music festival and dance odyssey in the South Wairarapa.

#### CubaDupa

##### MARCH

A vibrant community festival of food, music, and art to celebrate Cuba Street.

## AUTUMN/WINTER

#### Highball

##### MAY

Celebrate and learn more about the art of cocktails with top bartenders and spirits producers.

#### Wellington Jazz Festival

##### JUNE

Enjoy some of the finest local and international jazz musicians performing in venues, bars and eateries around the city.

*A seasonal guide to the events happening around the Wellington region. For a comprehensive and searchable guide of upcoming events, concerts, sports games, and festivals, check out [WellingtonNZ.com/Events](http://WellingtonNZ.com/Events)*

#### Kia Mau

##### JUNE (EVERY TWO YEARS)

Experience contemporary Māori, Pasifika, and international Indigenous live performance.

#### Matariki Celebrations & Ahi Kā

##### JUNE/JULY

Celebrate the Māori New Year with fire, food, friends, and whānau (family).

#### Visa Wellington On a Plate

##### AUGUST

Wellington's epic region-wide, month-long food festival features cutting-edge and delicious events, food, and beverages.

#### Beervana

##### AUGUST

New Zealand's biggest beer festival with creative brewery displays, live music, and hundreds of different beers.

## SPRING

#### Wellington Pride Festival

##### SEPTEMBER

Two weeks of LGBTQIA+ celebrations across Te Whanganui-ā-Tara.

#### World of WearableArt® Awards Show (WOW®)

##### SEPTEMBER – OCTOBER

An internationally acclaimed spectacular stage show blending art, fashion, theatre and design at TSB Arena.

#### Blossom Valley

##### SEPTEMBER – OCTOBER

Upper Hutt's Aston Norwood Gardens come alive under a canopy of spectacular pink cherry blossoms.

#### Verb Festival

##### NOVEMBER

Not your typical literary festival - it's fast, it's fun, it's held in bookshops, bars and record stores.

#### Toast Martinborough

##### NOVEMBER

Savour fine wine, cuisine and music in the picturesque surroundings of the famous wine-growing village, Martinborough.

#### Beers at the Basin

##### DECEMBER

Summer starts here with craft beer, food, and music at the Basin Reserve.





# Wellywood:

## THE FILM CAPITAL

*As a UNESCO City of Film, Wellington is a hub of storytelling and creativity. Explore film locations, visit bars and restaurants popular with the stars, and check out exhibits and sculptures crafted by artisans who have worked on some of the world's biggest movies.*



**MOUNT VICTORIA** / Mount Victoria lookout is one of the city's most popular visitor sites, offering panoramic views across the harbour and hills. Iconic scenes from *The Lord of the Rings* trilogy were filmed here, including the famous 'Get off the road' and 'Escape from the Nazgûl' scenes.



**WELLINGTON AIRPORT** / As soon as you land at Wellington Airport you know you've reached the home of Wētā Workshop's iconic movie-making empire. Greeting you in the arrival hall are massive Middle-earth giants, Gandalf and the giant eagles, and Smaug the dragon. These epic installations were created by the talented crew of Oscar-winning Wētā Workshop and are a lasting reminder of the impact *The Lord of the Rings* and *The Hobbit* trilogies have had on Wellington.



**RIVENDELL** / Less than an hour from Wellington's CBD, Kaitoke Regional Park is a lush green area boasting swimming, hiking, biking, kayaking and camping - and an iconic filming location from *The Lord of the Rings*. Transport yourself to Middle-earth and picnic amongst the beauty of the Rivendell film location, complete with a replica elvish archway so you can recreate the famous Aragorn and Arwen kiss.



**MUSEUM OF NEW ZEALAND TE PAPA TONGAREWA** / The film community makes its mark on Wellington not just through movies, but also through its art. Te Papa has joined forces with Wētā Workshop to create an exhibition like no other. *Gallipoli: The Scale of Our War* combines the world of museums with the world-class creative artistry of Wētā Workshop, who spent 24,000 hours of labour creating hyper-realistic 2.4 size human figures, immersing you in the Gallipoli campaign of World War I.



**WĒTĀ CAVE** / The Wētā Cave is the public gateway to the Wētā Workshop. Born in the back room of Sir Richard Taylor and Tania Rodger's Wellington flat in 1987, the pair later formed Wētā Workshop with friends Sir Peter Jackson and Jamie Selkirk in 1993 for the filming of *Heavenly Creatures*. Visitors to the Wētā Cave can view a selection of props, buy collectibles, and learn about the Workshop, which was propelled to fame after producing sets, costumes, armour, weapons and creatures for *The Lord of the Rings* film trilogy.



### AVID GALLERY

Exquisite handcrafted jewellery, glass, and ceramics from New Zealand's leading contemporary artists. AVID Gallery has been an institution for Wellington art lovers and a must-see for local and overseas visitors for more than 25 years.

**A** 48 Victoria Street, Te Aro

**W** [avidgallery.co.nz](http://avidgallery.co.nz)



### BOLTON STREET CEMETERY

Many early pioneers and important historical figures have been laid to rest in Bolton Street Cemetery – one of New Zealand's oldest public cemeteries. Take a walk back in time, explore the history and enjoy the splendid displays of heritage roses. Free entry.

**A** Bolton Street, Thorndon

**W** [wellingtongardens.nz/bolton-street-cemetery](http://wellingtongardens.nz/bolton-street-cemetery)



### CABLE CAR MUSEUM

Wellington Cable Car is one of the city's iconic attractions and a must-do for visitors. When you reach the top, visit the Museum that is located in the original winding house with mechanisms used between 1902 – 1978 and one of the original carriages.

**A** 1A Upland Road, Kelburn

**W** [museumswellington.org.nz/cable-car-museum](http://museumswellington.org.nz/cable-car-museum)



### CITY GALLERY WELLINGTON

City Gallery Wellington is the capital's hub of contemporary art. With a dynamic programme of exhibitions and events, City Gallery has an international reputation for showcasing artists from Aotearoa and beyond. Visit their seven galleries and in-house gift shop seven days a week. Free entry.

**A** Te Ngākau Civic Square, 101 Wakefield Street

**W** [citygallery.org.nz](http://citygallery.org.nz)



### EMBASSY THEATRE

Host of the world premieres of *The Lord of the Rings: The Return of the King* and *The Hobbit: An Unexpected Journey*, Wellington's iconic cinema has been fully refurbished and offers a state-of-the-art movie-going experience. Experience fine food and drink at the beautiful Black Sparrow bar in the lobby.

**A** 10 Kent Terrace, Mount Victoria

**W** [embassytheatre.co.nz](http://embassytheatre.co.nz)



### FEAR FACTORY WELLINGTON

Enter Wellington's newest haunted attraction. This interactive dark maze will amaze and terrify you. If you're after a dose of adrenalin – this is it. Real actors means real frights and real fun. Suitable for teenagers and families.

**A** 2/120 Cuba Street, Te Aro

**W** [fearfactory.co.nz](http://fearfactory.co.nz)



### HOLOCAUST CENTRE

The Holocaust Centre of New Zealand inspires and empowers action against antisemitism, discrimination, and apathy by remembering, educating, and bearing witness to the Holocaust. We welcome visitors, host events, and offer speakers and educational packages for tour groups, school groups, and community groups.

**A** 80 Webb Street, Te Aro

**W** [holocaustcentre.org.nz](http://holocaustcentre.org.nz)



### KATHERINE MANSFIELD HOUSE & GARDEN

Enter the 1888 home of a fashionable colonial family and discover the world of internationally acclaimed New Zealand writer Katherine Mansfield at her birthplace. Enjoy a heritage garden and changing exhibitions. Entry fees apply.

**A** 25 Tinakori Road, Thorndon

**W** [katherinemansfield.com](http://katherinemansfield.com)



### NAIRN STREET COTTAGE

One of the oldest cottages in Wellington, home to the Wallis Family, who lived there for three generations. Take a look through the house and find out more about this early settler family or take a stroll through the heritage gardens. Adults \$8, children \$4.

**A** 68 Nairn Street, Mount Cook

**W** [museumswellington.org.nz/nairn-street-cottage](http://museumswellington.org.nz/nairn-street-cottage)



### NEW ZEALAND PORTRAIT GALLERY

The New Zealand Portrait Gallery Te Pūkenga Whakaata tells the stories of New Zealanders through the art of portraiture. Free entry.

**A** Shed 11, Lady Elizabeth Lane, Wellington Waterfront

**W** [nzportraitgallery.org.nz](http://nzportraitgallery.org.nz)





### OLD ST PAUL'S

History comes to life in this former cathedral. Experience the wonderful and sometimes quirky stories of this stunning building, its historic location and its people through a range of tours and an exhibition.

**A** 34 Mulgrave Street, Thorndon

**W** [oldstpauls.co.nz](http://oldstpauls.co.nz)



### SOUTHWARD CAR MUSEUM

Take a short drive to Kāpiti Coast's Southward Car Museum and enjoy a couple of hours strolling around a truly world-class car museum. There's over 450 cars and motorbikes, as well as exhibits covering the history of transport. Enjoy refreshments at the on-site coffee shop.

**A** 250 Otaihangā Road, Paraparaumu

**W** [southwardcarmuseum.co.nz](http://southwardcarmuseum.co.nz)



### SPACE PLACE

Journey into space with Space Place's stunning full-dome planetarium shows and exhibitions telling the stories of New Zealanders who have been a part of space discovery and lived by the stars.

**A** 40 Salamanca Road, Kelburn

**W** [spaceplace.nz](http://spaceplace.nz)



### STANSBOROUGH MILL

Hear the unique Stansborough story, from working sheep station to costumes on the silver screen. See the historical 1890s looms and artisans creating from their signature 'Stansborough grey' wool, the only place in the world to farm this unique sheep breed. Shop at the gallery or take a pre-booked tour of the historic mill.

**A** 68 Fitzherbert Street, Petone

**W** [stansborough.co.nz](http://stansborough.co.nz)



### TE PAPA

A national icon, Te Papa is a must-visit. Translating to 'container of treasures', New Zealand's interactive national museum is host to six storeys of cutting-edge exhibitions with a contemporary, bicultural approach. Take a tour to learn about New Zealand culture, history, and art, and grab a memory to last a lifetime from their design-led gift store before you leave. Free entry.

**A** 55 Cable Street, Te Aro

**W** [tepapa.nz](http://tepapa.nz)



### THE DOWSE ART MUSEUM

Enjoy contemporary art and culture at this free public art gallery in Lower Hutt. A new experience every time, The Dowse is known for its exhibitions, public programmes, and spaces that are accessible to people of all ages. Free entry.

**A** 45 Laings Road, Lower Hutt

**W** [dowse.org.nz](http://dowse.org.nz)



### WELLINGTON CABLE CAR

Catch a ride on this Wellington icon for unforgettable views, amazing art, and a slice of Wellington history. The Cable Car has been trundling between Lambton Quay and Kelburn for 100 years, and is the country's only remaining funicular railway. Departs every 10 minutes, check [wellingtoncablecar.co.nz](http://wellingtoncablecar.co.nz) for hours.

**A** 280 Lambton Quay

**W** [wellingtoncablecar.co.nz](http://wellingtoncablecar.co.nz)



### WELLINGTON MUSEUM

Named as one of the top 50 museums in the world by *The Times London*, Wellington Museum shares stories from across the Wellington region. Located on Wellington's waterfront, entry is free to discover the rich social and cultural history of Wellington.

**A** 3 Jervois Quay, Queens Wharf

**W** [museumswellington.org.nz](http://museumswellington.org.nz)



### WĒTĀ WORKSHOP TOURS & EXPERIENCES

Dive head-first into a world of creativity, physical film effects, and movie magic at Wētā Workshop. From *The Lord of the Rings* and *The Hobbit* to *Avatar* and *District 9*; learn about props, costumes, and creatures created for your favourite films.

**A** 1 Weka Street, Miramar

**W** [wetaworkshop.com/tours](http://wetaworkshop.com/tours)



### WHIRINAKI WHARE TAONGA

A vibrant arts centre presenting award-winning exhibitions and performing arts. Experience live theatre, comedy, dance, music, and the best New Zealand art. Limelight Café and Upper Hutt i-SITE on-site. Free entry.

**A** 836 Fergusson Drive, Upper Hutt

**W** [expressions.org.nz](http://expressions.org.nz)

# Culinary — capital

*Wellington's reputation as New Zealand's culinary capital is well-deserved: we have more eateries and bars per capita than New York City. Get the full Wellington gastronomic experience with brunch and coffee at a local café, visit a market, sip local wine and craft beer, dine at an acclaimed eatery, and end with a perfectly made cocktail.*



## — COFFEE

With around 20 local roasteries, you're never far from a freshly roasted coffee bean in Wellington. We take coffee seriously and our cafés and restaurants pride themselves on serving expertly made coffee, just the way you like it. Brace yourself for the best flat white of your life.

## — TASTE THE CITY

We may be small but Wellington packs a punch when it comes to food. Taste your way around the world at cafes, restaurants, bistros, bars, and pubs serving up some of the best culinary experiences imaginable. Eat a little or a lot and sample the flavours of Aotearoa and beyond at award-winning eateries serving everything from pub grub to five-course degustation menus.

## — CRAFT BEER CAPITAL

Wellington is home to many craft beer bars and boutique breweries who have paved the way for New Zealand's craft beer revolution. Park up at a cosy bar or sit al fresco in the sun, and sample the lagers, ales, sours, stouts, and everything in between that has put Wellington on the map as the craft beer capital.

Clockwise from top / The Botanist, Fix and Fogg, ParrotDog, Kisa, Bellamys by Logan Brown, Swimsuit coffee







### GARAGE PROJECT

Serving up a selection of creative beers that never disappoint, this converted service station is the site of Garage Project's brewery and cellar door. Visit to discover and taste new beer and wine and take a bottle or rigger of your new favourites away with you.

- A** 68 Aro Street, Aro Valley  
**W** [garageproject.co.nz](http://garageproject.co.nz)



### GARAGE PROJECT 91 ARO

Just up the road from the Garage Project brewery, the Taproom showcases 20 regularly-changing beers on tap plus a selection of bottles and cans and Garage Project Crushed wines. There's a simple assortment of tasty food available to complement the beer and wine.

- A** 91 Aro Street, Aro Valley  
**W** [garageproject.co.nz](http://garageproject.co.nz)



### GOLDING'S FREE DIVE

A quality and unpretentious city neighbourhood bar with a loyal following, drop into Golding's to try some of the best fresh local beers on tap and order pizza from nearby Pizza Pomodoro and have it delivered to your table. As Golding's like to say, 'beer is love!'

- A** 14 Leeds Street, Hannahs Laneway, Te Aro  
**W** [goldingsfreedive.co.nz](http://goldingsfreedive.co.nz)



### PARROTDOG BAR

Parrot Dog's flagship bar and cellar door is nestled in the seaside suburb of Lyall Bay. Designed with comfort in mind, the retro space offers tastings from a refreshing ten tap line-up, as well as cold tinnies and bottled beer to go. Fill a flagon while you're there, and talk good beer with the staff.

- A** 60-66 Kingsford Smith Street, Lyall Bay  
**W** [parrottdog.co.nz](http://parrottdog.co.nz)



### SPRIG & FERN

Pop in for a visit and experience the warm and welcoming feel of a local craft beer tavern. There's 19 taps of award-winning beers and ciders, all without the distraction of TV screens, pokies and pool tables.

- A** 342 Tinakori Road, Thorndon  
**W** [sprigandferntaverns.co.nz/taverns/wellington/tinakori-road/](http://sprigandferntaverns.co.nz/taverns/wellington/tinakori-road/)



### FORK AND BREWER

Watch your beer being brewed right in front of you at this small brewery that packs a punch in the centre of the city. Take your pick from their rotating taps of hoppy goodness, and sample the menu of delicious pub grub, pizzas, and burgers.

- A** 14 Bond Street, Te Aro  
**W** [forkandbrewer.co.nz](http://forkandbrewer.co.nz)



### MALTHOUSE

The team at Malthouse know a thing or two about a good brew. One of the original craft beer bars in the capital, Malthouse boasts 29 taps of excellent local brews, and six temperature-controlled beer fridges so you always have just the right amount of cold.

- A** 48 Courtenay Place, Te Aro  
**W** [themalthouse.co.nz](http://themalthouse.co.nz)

### TOP SPOTS FOR COFFEE



### COFFEE SUPREME

Coffee Supreme has two locations in the city, and each offers fresh beans, brewing expertise, and excellent coffee. Head to their Midland Park retail store for brewing gear, tastings and coffee to-go, or visit their café, Customs, for a cuppa and a catch up with friends.

- A** 31 Waring Taylor Street/39 Ghuznee Street, Te Aro  
**W** [coffeesupreme.com](http://coffeesupreme.com)



### EMPORIO COFFEE

Roasting coffee in Wellington since 2000, visit the Emporio HQ and espresso bar just off Cuba Street. Coffee, teas, simple fresh food and barista training.

- A** 90 Abel Smith Street, Te Aro  
**W** [emporio.co.nz](http://emporio.co.nz)



### HAVANA COFFEE WORKS

Leading the coffee revolution since 1989, discover the capital's original coffee brand. Visit their iconic green HQ for sustainably roasted beans, a passionate team, and coffee you feel.

- A** 163 Tory Street, Te Aro  
**W** [havana.co.nz](http://havana.co.nz)



## MOJO

Mojo is a staple of the coffee capital, and their numerous cafés can be found in handy locations around the city for you to get your caffeine fix. Visit 'The Beanery' on Lambton Quay to discover unique brewing methods, learn about specialty coffee beans, and see the roasting process in action.

- A** 180 Lambton Quay/Various locations
- W** [mojo.coffee](http://mojo.coffee)



## L'AFFARE

For 30 years, L'Affare has been bringing the best and freshest coffee to New Zealanders. An extensive café refurb in 2018 and a slick all-day menu clinches the café's reputation as a firm local favourite.

- A** 27 College Street, Te Aro
- W** [laffare.co.nz](http://laffare.co.nz)

## TOP SPOTS TO EAT AND DRINK



## APACHE

Describing themselves as 'where Hanoi met Paris', Apache fuses Vietnamese cuisine with French flavours in a modern, minimal setting. Designed for sharing, their plates are generous and drinks skew local.

- A** 122 Wakefield Street, Te Aro
- W** [apache.kiwi](http://apache.kiwi)



## BELLAMYS BY LOGAN BROWN

Once a haunt exclusive to parliamentarians, Bellamys have opened their doors to the public. Soak up the rich history of its home, the Beehive, and enjoy fine New Zealand cuisine with a focus on ethical, sustainable and local. Open for lunch and dinner, bookings essential.

- A** Level 3, The Beehive, 1 Molesworth Street, Pipitea
- W** [bellamysbyloganbrown.co.nz](http://bellamysbyloganbrown.co.nz)



## CHARLEY NOBLE

Gather round the woodfire or perch up at the bar for local ingredients and casual ambience at this impressive eatery. The drinks list is award-winning, and the welcoming service will leave you feeling right at home for lunch or dinner.

- A** Huddart Parker Building, 1 Post Office Square
- W** [charleynoble.co.nz](http://charleynoble.co.nz)



## CHOW

Upstairs on Tory Street you'll find a fresh and modern take on Asian cuisine. Vegan and vegetarian friendly, you'll want to try more than a few of their small plates, and don't forget the cocktail menu for an Asian-fusion inspired tipple.

- A** 45 Tory Street, Te Aro
- W** [chow.co.nz](http://chow.co.nz)



## CIRCA THEATRE CAFÉ & BAR

Grab a pre-theatre drink or dinner at the in-house restaurant at Circa. Positioned a stone's throw from the sea, the seasonal menu offers homely fare and welcomes dietary requirements.

- A** 1 Taranaki Street, Te Aro
- W** [circa.co.nz/restaurant-bar](http://circa.co.nz/restaurant-bar)



## EVA BEVA PUB

Your local pub in the centre of the city, Eva Beva boasts a wide range of tap beers, tasty gastropub grub, and a rotating roster of local music, gigs and quiz nights. The eclectic decor is a feast for the eyes (there's even a car tucked up in the corner), and regular food and drink deals mean you'll never leave with an empty stomach (or wallet).

- A** 35 Dixon Street, Te Aro
- W** [evabeva.nz](http://evabeva.nz)



## FISH N' CHIPS ON TORY

Serving fresh and tasty New Zealand seafood, Fish n' Chips on Tory, specialises in the iconic Kiwi meal. Order some fish and chips to eat in, or take away to eat at the nearby waterfront.

- A** Shop 5, 100 Tory Street, Te Aro



## FRATELLI

Italian for 'brothers', Fratelli is a modern take on authentic Italian cuisine. The brothers behind the restaurant ensure the produce is fresh, the wood-fired pizza oven is always hot, and all pasta and gnocchi are made in-house.

- A** 15 Blair Street, Te Aro
- W** [fratelli.net.nz](http://fratelli.net.nz)





## GELISSIMO

You'll be spoilt for choice at Gelissimo, where the flavours are anything but boring. Gelato and sorbet are concocted in creative and exciting combinations, and with two locations along the waterfront you might find yourself coming back to try the newest creations on offer.

- A** 11 Cable Street/153 Oriental Parade
- W** [gelissimo.co.nz](http://gelissimo.co.nz)



## HIGHWATER EATERY

Highwater is a warm and welcoming eatery from an award-winning hospitality team returned home from Melbourne. A place to settle in with your coffee, park up at the bar, or sample some quality, delicious, locally sourced food. A gem in the Wellington culinary scene.

- A** 54 Cuba Street, Te Aro
- W** [highwatereatery.co.nz](http://highwatereatery.co.nz)



## HIPPOPOTAMUS RESTAURANT & COCKTAIL BAR

Hippopotamus, QT Wellington's flagship French-inspired restaurant, is a delicious dining experience in a stunning setting. The broad menu is peppered with a delicious mix of comfort food and fine-dining dishes that are designed to satisfy your hunger.

- A** 90 Cable Street, Te Aro
- W** [qthotels.com/wellington/eat-drink/hippopotamus](http://qthotels.com/wellington/eat-drink/hippopotamus)



## HOT SAUCE

QT Wellington cranks up the cool with Asian-inspired dishes and banging cocktails; an ideal spot for lazy afternoon grazing, vibrant evening dining, or a cheeky nightcap or three. Hot Sauce offers traditional Asian flavours with a contemporary twist.

- A** 90 Cable Street, Te Aro
- W** [qthotels.com/wellington/eat-drink/hot-sauce](http://qthotels.com/wellington/eat-drink/hot-sauce)



## KAFFEE EIS

Locally-owned and operated, Kaffee Eis (pronounced café ice) are known for their modern fusion of New Zealand and European gelato flavours. They're also known for their excellent Mojo espresso coffee. With five locations around central Wellington, you're never far from a Kaffee Eis in the capital.

- A** 146 Cuba Street/29 Courtenay Place/236 Oriental Parade/The Boatshed Frank Kitts Park/The Kiosk TSB Arena
- W** [kaffeeeis.co.nz](http://kaffeeeis.co.nz)



## LOVE BITE

Upstairs in a hidden laneway you'll find an eccentric cocktail bar. Filled with an array of 70's & 80's memorabilia and offering a menu of classic cocktails with a twist, head here for well lit liquor and daily specials. Open from 5pm Wednesday to Saturday.

- A** 2 Forrester's Lane, Te Aro
- W** [lovebite.nz](http://lovebite.nz)



## LITTLE WAFFLE SHOP

The cutest waffle shop in the city serves up fresh, hot waffles seven days a week. Visit the blue windows on Courtenay Place for their sweet treats, and try the Waffle of the Week for a changing rotation of creative flavours.

- A** 53 Courtenay Place, Te Aro
- W** [thelittlewaffleshop.com](http://thelittlewaffleshop.com)



## MARANUI CAFÉ

Wellington icon Maranui is housed right on Lyall Bay beach above the local Surf Life Saving Club. Take front row seats to watch the surfers, or sit inside among the nautical decor and enjoy the best quality café fare, including their famous milkshakes and moreish shoestring fries.

- A** 7A Lyall Parade, Lyall Bay
- W** [maranuicafe.co.nz](http://maranuicafe.co.nz)



## MONSOON POON

Take a trip to South East Asia in this lively establishment serving up dishes from across the region for lunch and dinner. Indulge in a cocktail or two, and make the most of the diverse menu by sharing plates around the table.

- A** 12 Blair Street, Te Aro
- W** [monsoonpoon.co.nz](http://monsoonpoon.co.nz)



## NIKAU CAFÉ

Situated on the ground floor of City Gallery Wellington, Nikau Café serves up simple, stylish food and all day brunch. Sit in the sunny outside courtyard and make sure you order the kedgeree featuring house-smoked fish – an iconic Wellington dish.

- A** Te Ngākau Civic Square, 101 Wakefield Street
- W** [nikaucafe.co.nz](http://nikaucafe.co.nz)



## OLIVE

A Cuba Street oasis, Olive serves up contemporary breakfast, lunch, and dinner. Head through the quirky café into the hidden courtyard to dine under the olive tree, and escape the city with a flat white or local wine.

- A** 170-172 Cuba Street, Te Aro
- W** [oliverestaurant.co.nz](http://oliverestaurant.co.nz)



## ORTEGA FISH SHACK & BAR

A restaurant and bar serving a simple, fresh menu with an emphasis on seafood. The nautical décor is quirky and playful, while the service is slick and professional. A firm favourite with locals and visitors alike.

- A** 16 Majoribanks Street, Mount Victoria
- W** [ortega.co.nz](http://ortega.co.nz)



## PORTLANDER BAR & GRILL

Nestled in a spot where land meets sea, the award-winning Portlander is a unique take on the grill house concept – one which is local, seasonal and just a little bit wild. Portlander offers delicious dishes to both meat and veggie eaters.

- A** Cnr Featherston & Whitmore Streets, Pipitea
- W** [portlander.co.nz](http://portlander.co.nz)



## PUFFIN

Tucked away on the ground floor of a heritage building, Puffin is a minimalist wine bar with a focus on natural wines that oozes class. Settle into a velvet booth or grab a bottle to takeaway.

- A** 60 Ghuznee Street, Te Aro
- W** [puffinwinebar.com](http://puffinwinebar.com)



## QUEEN SALLY'S DIAMOND DELI

Cabinets of sweet and savoury delights, shelves of New Zealand-made preserves, and a constantly humming coffee machine are hallmarks of Queen Sally's. With eclectic decor and a cheery colour scheme, you won't want to miss this fun seaside deli.

- A** 200 Queens Drive, Lyall Bay
- W** [queens.co.nz](http://queens.co.nz)



## SHED 5

A stunning restaurant located on the Wellington waterfront housed in an historical wharf store, with an emphasis on excellent food and unobtrusive service. The menu showcases quality New Zealand seafood, and the space offers intimate dining and bar areas.

- A** Shed 5, Queen's Wharf
- W** [shed5.co.nz](http://shed5.co.nz)



## SOUTHERN CROSS GARDEN BAR & RESTAURANT

A Wellington institution, 'The Cross' is a place for families and friends alike, with entertainment and activities every night of the week and one of Wellington's best garden bars.

- A** 39 Abel Smith Street, Te Aro
- W** [thesoutherncross.co.nz](http://thesoutherncross.co.nz)



## TE PAPA CAFÉ

Te Papa's ground-floor café offers great breakfasts, brunches, lunches, and fresh snacks, with gluten-free and vegetarian options available. The café has a kids' play area and a parents' room is available.

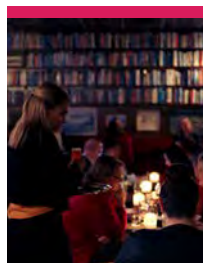
- A** Te Papa Tongarewa, 55 Cable Street, Te Aro
- W** [tepapa.nz](http://tepapa.nz)



## THAI CHEF'S RESTAURANT

If authentic Thai food is what you're after, then look no further than Thai Chef's. Serving up traditional Thai cuisine seven days a week, you'll leave with a full belly and satisfied palate, with unique spices and flavours in every dish.

- A** 1 Blair Street, Te Aro
- W** [thaichef.co.nz](http://thaichef.co.nz)



## THE LIBRARY

Cosy up for a creative cocktail or indulge in a decadent dessert at equal parts reading room, lounge and bar, The Library. You'll feel a world away from bustling Courtenay Place below, and a range of live music will keep you entertained for hours – if the hundreds of books surrounding you haven't already.

- A** 53 Courtenay Place, Te Aro
- W** [thelibrary.co.nz](http://thelibrary.co.nz)



# Shopping

*Shopping in Wellington is a delight – not only because of the range of stores, but the city's compact nature means it's very walkable. Start out shopping the high street stores on Lambton Quay and end up browsing vintage stores on Cuba Street, all in an afternoon.*

## — LAMBTON QUAY

Home to some of Wellington's favourite high street brands and big designers. Head to the **Old Bank Arcade** where top New Zealand labels are presented in a beautiful historic converted bank.

## — GHUZZEE STREET

With stylish boutiques, excellent cafés, galleries, street art, craft beer bars, bakeries, and restaurants, Ghuznee Street is a hub for shoppers and foodies alike.

## — CUBA STREET

The home of vintage shopping in Wellington with a line-up of colourful, quirky and refined stores selling pre-loved treasures waiting to be rediscovered.

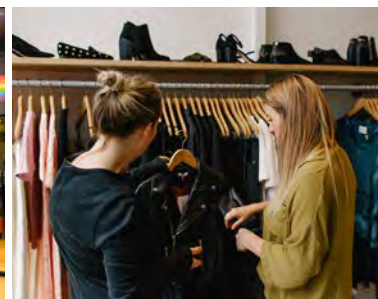
## — VICTORIA AND WILLIS STREETS

Full of labels from Wellington and beyond, this part of town has some absolute hidden gems – and make sure you take a wander down Lombard Lane.

## — COLLEGE AND JESSIE STREETS

An excellent selection of local design, homeware, and fashion, and easy access to a cup of coffee to keep you going in between shops.

Clockwise from top / Madame Fancy Pants, Vessel, Caughley, Thrift, Good Books





### CAUGHLEY

Nestled down Ghuznee Street you'll find Caughley – an ever-changing hub of independent high-quality fashion, timeless accessories, exceptional shoes, and sought-after jewellery. Founded in 2015 by Rachael Caughley, the store is home to carefully selected pieces from coveted international brands and emerging New Zealand designers.

**A** 57 Ghuznee Street, Te Aro  
**W** [caughley.com](http://caughley.com)



### ECCO SHOES

It is the ongoing development of their premium leather uppers, and specialised soles, that keeps ECCO in natural motion. The ECCO range of men's and women's footwear is designed to be light, flexible and supremely comfortable.

**A** 39 Willis Street, Te Aro  
**W** [eccoshoes.co.nz](http://eccoshoes.co.nz)



### KOWTOW

Kowtow has been committed to making ethical and sustainable womenswear since 2006. Made from organic, renewable, biodegradable, and regenerated materials, and manufactured within a fairtrade supply chain. Explore their collections in their flagship store, an award-winning space that highlights natural, locally-sourced, and sustainable materials.

**A** 29 College Street, Te Aro **W** [kowtowclothing.com](http://kowtowclothing.com)



### KURA GALLERY (AOTEAROA ART + NZ DESIGN)

The destination for authentic Māori art and unique New Zealand design, including traditional carvings from tohunga whakairo master carvers, and authentic West Coast greenstone/jade from represented carvers. Plus, contemporary paintings, sculpture, jewellery, and New Zealand memorabilia and design. Open seven days.

**A** 19 Allen Street **W** [kuragallery.co.nz](http://kuragallery.co.nz)



### MADE IT

Made It stocks hand-made and high-quality objects created by over 65 small and independent businesses from around Aotearoa. Support New Zealand makers and nab a unique gift for yourself or someone else, each with an interesting story behind it.

**A** 103 Victoria Street, Te Aro  
**W** [madeitnz.co.nz](http://madeitnz.co.nz)



### OLD BANK ARCADE

Set in the historic Bank of New Zealand building, Old Bank Arcade brings together the latest in fashion in a unique shopping experience. Peruse local clothing, shoes, homewares, and gifts, or take some time out for a coffee, meal, or beauty treatment – all under the one roof, and conveniently located on Lambton Quay.

**A** 233-237 Lambton Quay  
**W** [oldbank.co.nz](http://oldbank.co.nz)



### RYOS

A sports-lovers dream, RYOS stocks branded apparel for all major local and national teams. Show your love for the All Blacks or Wellington Phoenix with a team jersey, or grab some high-quality sports and outdoor gear from well-known international labels.

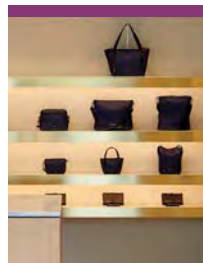
**A** 332 Lambton Quay  
**W** [ryos.co.nz](http://ryos.co.nz)



### WELLINGTON SEWING CENTRE

Wellington Sewing Centre has everything you need for your fabric and yarn projects – modern dressmaking fabrics and patterns, craft cottons, a wonderful selection of yarns and patterns, haberdashery, seven brands of sewing machines and overlockers, classes – and friendly, expert staff.

**A** 40 Coutts Street, Kilbirnie  
**W** [sewingdirect.co.nz](http://sewingdirect.co.nz)



### YU MEI

Founded by Wellingtonian Jessie Wong, Yu Mei create leather bags and accessories that are functional with an understated luxury. Yu Mei's Wellington flagship store is a stunning place to experience their collection of leather goods, which ranges from bags to wallets and accessories.

**A** 85 Victoria Street, Te Aro  
**W** [yumeibrand.com](http://yumeibrand.com)



### ZAMBESI

One of New Zealand's foremost and longest-running fashion names, Zambesi is host to a range of local and international labels for fashion-forward men and women. As well as their own collections, Zambesi stocks avant-garde and unique brands, housed in a warehouse-style store in the Lambton Quarter.

**A** 103 Customhouse Quay **W** [zambesistore.com](http://zambesistore.com)



# Where — to stay

*From rooms with a view and spacious apartments, to upmarket and luxurious lodgings. No matter your budget, length of stay, or pillow preference, Wellington has accommodation to make you feel right at home.*



| Clockwise from top / Naumi Studio Hotel Wellington, Ohtel, QT Wellington

## — SEASIDE STAYS

Base yourself near Oriental Bay, a beautiful seaside suburb that's on the doorstep of the CBD. Start your day with a walk or run around the bays and end it with dinner at a waterfront eatery.

**Bay Plaza Hotel / Copthorne Wellington Oriental Bay / Ohtel**

## — CENTRAL CITY

Wellington is an incredibly compact city so no matter where you choose to stay, you'll find that nothing is too far away, but these hotels will put you right in the heart of inner-city Wellington.

**CityLife Wellington / Ibis Wellington / James Cook Hotel  
Grand Chancellor / Mercure Wellington Abel Tasman Hotel /  
Oaks Wellington Hotel / West Plaza Hotel**

## — FAMILY-FRIENDLY

These are some of the best hotels for family groups that offer spacious rooms or are fully-self-contained with special amenities and thoughtful touches that kids will love.

**Boulcott Suites / Novotel Wellington / Quest on Johnston /  
Ramada by Wyndam Wellington / Rydges Wellington**

## — LAIDBACK LUXURY

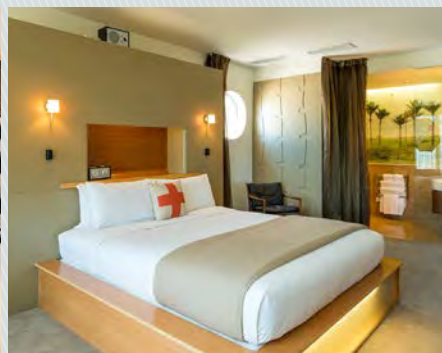
Wellington is a great place to treat yourself with a range of hotels offering a style of luxury that's distinctly quirky and cool. These hotels offer beautiful and immersive experiences for guests, impeccable service, and unmatched attention to detail.

**DoubleTree by Hilton / Intercontinental Wellington /  
The Intrepid Hotel / Naumi Studio Hotel Wellington /  
QT Wellington / Sofitel Wellington**

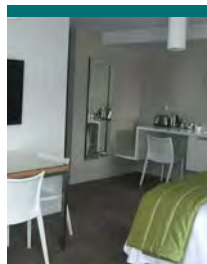
## — CONVENIENT FOR STOPOVERS

If you have an early flight or ferry to catch, it makes sense to stay close by to maximise your sleep and minimise your transfer, with an easily accessible cityside stay.

**Rydges Wellington Airport / Atura Wellington**



Find your perfect stay at  
**[WellingtonNZ.com/accommodation](https://WellingtonNZ.com/accommodation)**



### APOLLO LODGE

Base yourself in the heart of the entertainment district, only a minute's walk from Courtenay Place, Te Papa, Oriental Bay, local attractions, theatres, and cinemas. Apollo's units and apartments are the perfect inner-city home away from home.

**A** 49 Majoribanks Street

**W** [apollo lodge.nz](http://apollo lodge.nz)



### ATURA WELLINGTON

A 3.5 star hotel located on the doorstep of Wellington's CBD and walking distance to many attractions. Atura is dedicated to sustainable practices, and champions environmentally friendly choices, offering in-room recycling and hotel bikes for guest use. Stay in one of their 108 comfortable guest rooms and dine in the on-site brasserie-style restaurant, all nestled in the green hills of Wellington.

**A** 24 Hawkestone Street, Thorndon

**W** [aturahotels.com/wellington](http://aturahotels.com/wellington)



### BAY PLAZA

Located on Wellington's exclusive Oriental Parade, Bay Plaza Hotel offers you city style, home comforts and stunning views at a great rate. Just a hop, skip and jump from everything you need and complete with a restaurant and bar.

**A** 40 Oriental Parade, Oriental Bay

**W** [bayplaza.co.nz](http://bayplaza.co.nz)



### BELLA VISTA MOTEL WELLINGTON

Located at beautiful Evans Bay, minutes from the airport and close to the city centre, Aquatic Centre, ASB Stadium, ferry terminal, and bus stop. These competitively-priced, self-contained studios offer comfort and great facilities including tea/coffee making facilities or kitchenettes, free Wi-Fi, airport shuttle, and parking.

**A** 302-304 Evans Bay Parade, Greta Point

**W** [staybellavista.co.nz](http://staybellavista.co.nz)



### BOLTON HOTEL

Wellington's premier independent hotel offers award-winning service and a range of spacious apartment-style suites just steps from Parliament. With free Wi-Fi, fitness centre, lap-pool and kitchens with washer/dryers in all suites; make Bolton Hotel your Wellington home.

**A** 12 Bolton Street

**W** [boltonhotel.co.nz](http://boltonhotel.co.nz)



### BRENTWOOD HOTEL

Conveniently located 2.6km from Wellington Airport with a free shuttle running 24/7. Free on-site car parking. Family-friendly hotel with 116 rooms, an on-site restaurant and bar, and an outdoor heated pool (summer months). Walking distance to ASB Sports Centre, Wellington Regional Aquatic Centre, Kilbirnie shopping and bus hub.

**A** 16 Kemp Street, Kilbirnie

**W** [brentwoodhotel.co.nz](http://brentwoodhotel.co.nz)



### CITYLIFE WELLINGTON

CityLife Wellington, located in the heart of the city, offers a range of one-and two-bedroom suites. From romantic getaways to indulgent shopping weekends, family holidays to business meetings, there's a suite to meet your needs. All one and two-bedroom suites have kitchenette, washing machine and dryer facilities.

**A** 300 Lambton Quay, Te Aro

(Vehicle entrance at 14 Gilmer Terrace)

**W** [heritagehotels.co.nz](http://heritagehotels.co.nz)



### HOTEL WATERLOO & BACKPACKERS (DOWNTOWN BACKPACKERS)

Located in Wellington's historic art deco Hotel Waterloo, opposite the railway station. Conveniently located to trains, buses, ferry, and attractions like Parliament, Sky Stadium, the city centre, and Te Papa. Ensuite bathrooms, Sky TV, bar, café, and Wi-Fi. Shared and private rooms. Open 24 hours.

**A** 1 Bunny Street

**W** [hotelwaterloo.co.nz](http://hotelwaterloo.co.nz)



### THE INTREPID HOTEL

A boutique hotel boasting 18 luxurious contemporary rooms for the modern traveller, just a stone's throw from Cuba Street. Careful design and thoughtful touches make this the perfect base to explore the city, with convenience and care at the heart of your stay.

**A** 60 Ghuznee Street, Te Aro

**W** [theintrepidhotel.com](http://theintrepidhotel.com)



### JAMES COOK HOTEL GRAND CHANCELLOR

Conveniently located in the heart of the city with direct access from The Terrace motorway off-ramp and pedestrian access to Lambton Quay, it's the ideal base for family, leisure, and business travel. Featuring two restaurants and bars, conference facilities, on-site parking, complimentary Wi-Fi, and recently refurbished Club Lounge, Executive Rooms, and Suites.

**A** 147 The Terrace

**W** [grandchancellorhotels.com](http://grandchancellorhotels.com)





### MERCURE WELLINGTON ABEL TASMAN HOTEL ACCOMMODATION

Perfectly balancing quality and affordability with a central location, relax in the city at this 3.5 star hotel. Catch up on emails at the in-room work desk, use your downtime to head to the hotel's gym or day spa, or step outside to one of the many CBD cafes and restaurants at your doorstep.

- A** 169 Willis Street, Te Aro
- W** [primehotels.co.nz](http://primehotels.co.nz)



### MERCURE WELLINGTON CENTRAL CITY HOTEL AND APARTMENTS

Offering hotel and apartment style accommodation in a convenient CBD location. 54 self-contained rooms are perfect for business or pleasure, and amenities include a 24-hour reception and continental breakfast to your room.

- A** 130 Victoria Street, Te Aro
- W** [primehotels.co.nz](http://primehotels.co.nz)



### NAUMI STUDIO HOTEL WELLINGTON

A visual feast for the senses, stay amongst colour and art in a beautiful heritage building on vibrant Cuba Street. Choose from 116 tastefully decorated rooms, and dine in the on-site bar and restaurant, or head to Cuba Street at your doorstep.

- A** 213 Cuba Street, Te Aro
- W** [naumihotels.com/studiowellington](http://naumihotels.com/studiowellington)



### NOMADS CAPITAL HOSTEL WELLINGTON

Located in the centre of Wellington, Nomads Capital is a 5-star Qualmark-rated backpackers with clean and comfortable rooms, great facilities, and fantastic staff. Free pancakes every morning, a free entrée-sized evening meal for all guests in Blend Bar, as well as free tea and coffee throughout your stay.

- A** 118/120 Wakefield Street
- W** [nomadsworld.com](http://nomadsworld.com)



### QT WELLINGTON

QT Wellington is the epitome of cool luxury – high tech, sophisticated spaces and a paradise for foodies. Go beyond your boundaries and be challenged by QT's art collection, while experiencing the comfort of having everything the modern traveller needs.

- A** 90 Cable Street, Te Aro
- W** [qthotels.com/wellington](http://qthotels.com/wellington)



### RAMADA BY WYNDHAM WELLINGTON

Based in the heart of Wellington city, Ramada by Wyndham Wellington is within easy walking distance of many key attractions. All rooms feature a kitchenette, laundry, and a sleek, modern fit out.

- A** 123 Taranaki Street, Te Aro
- W** [ramada.nz](http://ramada.nz)



### RYDGES WELLINGTON

The multi-award winning Rydges Wellington is centrally located, close to the waterfront and Sky Stadium. Offering a 17m heated pool, spa pool, sauna, valet car parking, and kitchenettes in every room. Don't forget, at Rydges Wellington, kids stay and eat free.

- A** 75 Featherston Street
- W** [rydges.com/wellington](http://rydges.com/wellington)



### RYDGES WELLINGTON AIRPORT

With a focus on great design, this 4-star hotel at Wellington Airport offers a fresh experience for travellers seeking convenience and comfort. Fully integrated with the main terminal building to provide unparalleled convenience for all their guests, there's a stunning restaurant offering 24-hour room service, a gym, and free Wi-Fi.

- A** 28 Stewart Duff Drive, Rongotai
- W** [rydges.com/wellington-airport](http://rydges.com/wellington-airport)



### WELLINGTON TOP 10 HOLIDAY PARK

Located just 15km from Wellington. Offering a peaceful spacious retreat with plenty of off-street parking, Wi-Fi, playground, games room – and easy access to public transport. A city park without the city feel.

- A** 95 Hutt Park Road, Lower Hutt
- W** [wellingtontop10.co.nz](http://wellingtontop10.co.nz)



### WEST PLAZA HOTEL

Explore Wellington from your doorstep at West Plaza Hotel, centrally-located in the heart of the city. Offering a welcoming and friendly atmosphere, West Plaza has 102 spacious and comfortable rooms, complete with a restaurant and bar.

- A** 110 Wakefield Street, Te Aro
- W** [westplaza.co.nz](http://westplaza.co.nz)

# Nature's playground

*Nestled between hills and harbour, you're never far from nature in Wellington. Hear native birds on a walk in the lush Town Belt surrounding the city, kayak on the harbour to explore beautiful bays and beaches, or go for a bike ride along one of Wellington's incredible trails.*



## — BEACHES AND BAYS

Set on a sparkling harbour, Wellington has many stunning beaches and bays. Hire an e-bike from **Switched On Bikes** to pedal from Oriental Bay around the Miramar Peninsula to Scorching Bay. Learn to surf at Lyall Bay, jump in a kayak to see the city from the sea, or go snorkelling in the South Coast's **Taputeranga Marine Reserve**.

## — WILDLIFE

Look for rare kiwi and tuatara and see how many native birds you can spy at **Zealandia Te Māra a Tāne**. Have a Close Encounter or become a Zookeeper for a Day with exotic and endangered animals at **Wellington Zoo**, meet some of Aotearoa's endangered birds at **Pūkaha National Wildlife Centre**, and feed farm animals at **Staglands Wildlife Reserve**.

## — WALK

See breath-taking views and hear native birds on a walk, run, or ride along one of Wellington's incredible trails. Whether you've got an hour, a half or a full day, you'll find plenty of trails to choose from that suit a range of fitness levels.

## — ZEALANDIA TE MĀRA A TĀNE

As you enter Wellington's world-first, fully fenced eco-sanctuary, it's easy to forget that you're just ten minutes' drive from the city. Situated in an idyllic valley alive with native and rare wildlife, a visit to **Zealandia Te Māra a Tāne** is like stepping back in time. Catch a free electric shuttle from Wellington i-SITE Visitor Information Centre on Wakefield Street or at the top of the Cable Car.



Clockwise from top / Mt Victoria, Escarpment Track, Wellington Zoo, Pūkaha National Wildlife Centre



# Find your wild

*Whether you're looking for an adrenalin rush on purpose-built mountain bike trails, to tick off one of New Zealand's Great Rides, a serene stroll to stunning views with family or friends, or an adventure through native bush with a four-legged sidekick, the Wellington region has trails to suit everyone. With hundreds of outstanding tracks on offer you have plenty to choose from, just don't forget to soak up nature and enjoy the views.*

## TOP 5 TRAILS IN THE WELLINGTON REGION



### REMUTAKA CYCLE TRAIL

One of New Zealand's Great Rides, walk or bike a winding journey that leads you from Petone, along the Hutt River and through the Remutaka Ranges to rural Wairarapa and the wild southern coast.



### ESCARPMENT TRACK

Take in spectacular views of Kapiti Island as you scale around 1,200 steep steps, navigate narrow pathways across ridgelines, and traverse two swing bridges high above the Kāpiti Coast on one of the region's finest walking adventures.



### MĀKARA PEAK MOUNTAIN BIKE PARK

A world-class park offering more than 40 mountain biking trails set amongst spectacular native bush and stunning views. Mākara Peak Mountain Bike Park offers something for everyone, from beginners through to experts and families.



### SOUTHERN WALKWAY

Starting from the Wellington city centre, follow the Town Belt through some of the city's best-loved parks and suburbs, all the way to Island Bay on the South Coast. Take in the panoramic views and see famous film locations from *The Lord of the Rings*.



### SKYLINE WALKWAY

Journey along Wellington's highest ridgelines and peaks, from Mākara Saddle, past Mount Kaukau to Johnsonville. Skyline Walkway is one of Wellington's premier trails and makes for the perfect adventure either on bike or on foot.

Find your wild at  
**[WellingtonRegionalTrails.com](http://WellingtonRegionalTrails.com)**



### ADRENALIN FOREST

Wellington's most thrilling adventure park, Adrenalin Forest is a great group activity for all ages and abilities. Make your way through the bridge, swing and treetop courses for an exhilarating experience for the whole family. Visit [adrenalin-forest.co.nz](http://adrenalin-forest.co.nz) for seasonal hours. Bookings recommended.

- A** Okowai Road, Aotea, Porirua  
**W** [adrenalin-forest.co.nz](http://adrenalin-forest.co.nz)



### KAPITI ISLAND

One of New Zealand's oldest and most important nature reserves, visit Kapiti Island for a slice of paradise just 5km off the Coast. Stay the night in on-site glamping accommodation, walk to the summit for uninterrupted views, and spot the rare Kiwi on a night-time tour. Only accessible via ferry.

- A** 29 Marine Parade, Paraparaumu Beach, Paraparaumu  
**W** [kapitiisland.com](http://kapitiisland.com)



### MUD CYCLES

Hire mountain bikes from Mud and experience Wellington's spectacular bush trail adventures and world-class riding with stunning views of the region in the hills surrounding the city. Or for a more relaxing day's adventure, phone Trek Global Backpackers on +64 4 471 3480 for city bikes so you can cycle the bays.

- A** 424 Karori Road, Karori  
**W** [mudcycles.co.nz](http://mudcycles.co.nz)



### NGĀ MANU NATURE RESERVE

Gather the family, pack a picnic and get back to nature. Discover Kāpiti Coast's idyllic bird sanctuary with walk-through aviaries and original native forest. The Reserve is open daily. Book in for a Kiwi Night Encounter (Fridays and Saturdays).

- A** 74 Ngā Manu Reserve Road, Waikanae  
**W** [ngamanu.co.nz](http://ngamanu.co.nz)



### ŌTARI-WILTON'S BUSH

The only public botanic garden in New Zealand dedicated solely to native plants, containing about 1,200 species, hybrids and cultivars. Take in the 100 hectares of native forest and five hectares of plant collections just 5km from the city centre. Open sunrise to sunset daily. Free entry.

- A** 160 Wilton Road, Wilton  
**W** [wellingtongardens.nz/otari](http://wellingtongardens.nz/otari)



### STAGLANDS

Nestled in the Hutt Valley's beautiful Akatarawa Valley, Staglands is an interactive, immerse nature experience for all ages. 25 hectares of bush, farmland and wetlands have been cultivated to allow visitors to get up close and personal with native flora and fauna. Take a feeding tour, hop on a tractor ride, or wander around the nature reserve independently. Open daily.

- A** 2362 Akatarawa Road, Akatarawa Valley, Upper Hutt  
**W** [staglands.co.nz](http://staglands.co.nz)



### TRUBY KING PARK

This 1.9 hectare heritage-listed estate was once home to Sir Truby and Lady Isabella King, founders of the Plunket Society. The garden of pines, roses, rhododendrons and azaleas was planted in the 1920s by Sir Truby himself and is flourishing to this day. Open daily from dawn to dusk. Free entry.

- A** 21B Manchester Terrace, Melrose  
**W** [wellingtongardens.nz/truby-king-park](http://wellingtongardens.nz/truby-king-park)



### WELLINGTON BOTANIC GARDEN

One of Aotearoa's oldest botanic gardens is a reprieve from the city, providing 25 hectares of winding paths, breath-taking views, and surprises around every corner. Admire the seasonal flora and fauna, wonder at a waterfall, feed the ducks at the duck pond, or visit the cafe and glasshouse. Check out [wellingtongardens.nz](http://wellingtongardens.nz) for upcoming events and seasonal highlights. Free entry.

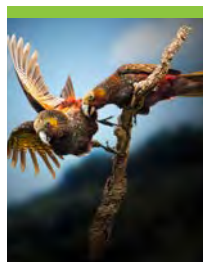
- A** 101 Glenmore Street, Kelburn **W** [wellingtongardens.nz](http://wellingtongardens.nz)



### WELLINGTON ZOO

Just 10 minutes from the city, Wellington Zoo is home to over 500 animals. See vets in action at The Nest Te Kōhanga, or check out an animal talk. Your adventure at the Zoo supports conservation around the world.

- A** 200 Daniell Street, Newtown  
**W** [wellingtonzoo.com](http://wellingtonzoo.com)



### ZEALANDIA TE MĀRA A TĀNE

Named as one of the Top 100 Greatest Places in the World by *TIME* magazine, Zealandia Te Māra a Tāne is a must-visit destination. Located just minutes from central Wellington, the world's first fully-fenced, predator free sanctuary is a haven for some of the world's most extraordinary wildlife and flora.

- A** Waiapu Road, Karori  
**W** [visitzealandia.com](http://visitzealandia.com)



# Get around in Wellington

*Wellington's compact city centre means that it's easy to explore on foot, with the added bonus of discovering hidden gems that you might not have otherwise – from street art to cafés, to sculptures and stores. Another great option is to hire a bike, and it's also easy to get around using public transport, taxis and ride share apps.*



## FROM THE AIRPORT

Wellington Airport is just 15 minutes' drive from the CBD so getting to and from the airport is a breeze. Taxis to the city cost around NZ\$35-40 or for a few dollars more, ask the driver to take the more scenic route into the city around the bays. Ride share apps including **Ola**, **Uber**, and **Zoomy** can be used for airport pick-ups and drop-offs, or pre-book a shuttle before you arrive for door-to-door service.

## GETTING AROUND TOWN

If you plan to travel by bus or train while you're in Wellington, pick up a Snapper card (\$10) from the Wellington i-SITE Visitor Centre on Wakefield Street – the cards can be used on all Metlink buses. Head to [metlink.org.nz](http://metlink.org.nz) or download the Metlink app to plan your journey, and find timetables and fare information.

## BIKE HIRE

For a fun way to explore the city without breaking much of a sweat, hire an e-bike from **Switched On Bikes** on Queens Wharf – they also offer guided tours of Wellington's waterfront and bays. **Green Jersey** offer a range of bikes for hire in Martinborough and **Wildfinder** offers bike hire in Lower Hutt's Pencarrow and Days Bay.

## FERRIES

The **East by West Ferry** operates regular services across Wellington Harbour to Matiu/Somes Island and Days Bay, Eastbourne. Purchase a Queens Wharf - Days Bay return ticket, which includes a stopover at Matiu/Somes Island.

## TRAINS

Catch the train from Wellington Station to explore Kāpiti Coast, Porirua, Hutt Valley and Wairarapa. Check out [metlink.org.nz](http://metlink.org.nz) to find timetables to help you plan your daytrip. Top tip: if you've bought a Snapper card for the buses, you can use it to snap on the trains, too!

## MEVO

All the convenience of a rental car, but with added flexibility and freedom. Sign up via the app and find available cars throughout the city, reserve your pick, and unlock using your phone. Drive for as long as you like, and return anywhere in the designated 'Flex Zone'. Sign up for free at [mevo.co.nz](http://mevo.co.nz).

## CITYHOP

New Zealand's leading car sharing service, providing on demand access to cars by the hour or day. Sign up for a membership online and collect a key card from collection points around the city. Book online, collect, and drive, and only pay for what you use. Find out more about how to get driving at [cityhop.co.nz](http://cityhop.co.nz).



### BLUEBRIDGE

One of the two operators providing passage across the Cook Strait, Bluebridge sails between Picton and Wellington 50 times a week. Drive on and off in your own vehicle, or hitch a ride as a foot passenger. You can even travel in luxury in a private cabin. Book online via their website.

- A** 50 Waterloo Quay, Pipitea
- W** [bluebridge.co.nz](http://bluebridge.co.nz)



### CAPITAL PERSONALISED TOURS

Showcasing Wellington and beyond with a range of personalised tours to ensure you get the most out of your visit to Wellington. Travel in a luxury 4WD with pick-up from your choice of location.

- W** [captours.co.nz](http://captours.co.nz)



### EAST BY WEST FERRY

Departing from the heart of Wellington City, the ferry makes frequent trips across to Days Bay and Eastbourne village, with daily stops at Matiu/Somes Island – a beautiful nature reserve and historic site in the centre of the harbour. Check out their electric ferry for the cleanest way to be on the water.

- A** Meridian Building, Queens Wharf
- W** [eastbywest.co.nz](http://eastbywest.co.nz)



### GREAT JOURNEYS OF NEW ZEALAND

Take a train or a ferry to enjoy the beauty of Aotearoa New Zealand on one of Great Journey's excursions. Their hop-on-hop-off trips are the perfect way to explore the country, from the mountain air to the ocean breeze. Jump on a ferry across the Cook Strait or hitch a ride on their trains to take a unique trip across the countryside.

- W** [greatjourneysofnz.co.nz](http://greatjourneysofnz.co.nz)



### INTERISLANDER

Offering car and passenger services between Picton and Wellington, the Interislander is the original Cook Strait ferry service. Enjoy the scenic 3.5 hour trip and make the most of the on board amenities, with most ships offering a cafe, restaurant, bar, playground, cinema, and nursery.

- A** Aotea Quay, Pipitea
- W** [interislander.co.nz](http://interislander.co.nz)



### NZ CRAFT BEER TOURS

Get a taste of Wellington's vibrant craft beer scene in an exclusive, behind the scenes tour of some of the city's coolest and tastiest breweries. Hosted by a local beer lover, there are a range of tour options that run Tuesday - Sunday in Wellington City and Upper Hutt's Brewtown.

- W** [craftbeertours.co.nz](http://craftbeertours.co.nz)



### SIGHTSEE WELLINGTON

Discover Wellington like a local on a tour with Sightsee Wellington. Experience the best attractions, learn more about local history, and get off the tourist trail with your knowledgeable guide. Whether you're into nature, history, film or beer, pick a tour that suits your tastes and discover the best the region has to offer.

- W** [sightseewellington.com](http://sightseewellington.com)



### SWITCHED ON BIKES

Get around the city in a whole new way with Switched On Bikes. Hire a bike or e-bike for a sustainable and fun way to explore Wellington, or take a guided tour for an insider's perspective on the city's hills and harbour.

- A** Queens Wharf
- W** [switchedonbikes.co.nz](http://switchedonbikes.co.nz)



### WALK WELLINGTON

Experience Wellington on a 2.5 hour guided walk. Enjoy the history, sights, and culture of this vibrant city with enthusiastic and knowledgeable local guides. Adults \$20, children 16 years and under free.

- A** Departs from i-SITE Visitor Centre, 111 Wakefield Street
- W** [walkwellington.org.nz](http://walkwellington.org.nz)



### WELLINGTON HELICOPTERS

View Wellington from a different angle on a Wellington Helicopters flight. View the rugged South Coast, take in Wellington Harbour or relax on a Heli lunch to Wharekauhau Country Estate.

- A** Shed 6, Queens Wharf
- W** [wellingtonhelicopters.net.nz](http://wellingtonhelicopters.net.nz)



# Explore Wellington's big backyard

*Exploring the Wellington region is a great way to experience the best that New Zealand has to offer in one compact and easy-to-discover package. Within an hour's drive or train ride of the city, you can explore nature, see breathtaking views, spot native wildlife, and eat, drink and shop unique regional fare. Whether you're looking for a day trip or a short stay, you'll find world-class wineries, boutique shopping, outdoor adventures, delicious food and more, all in Wellington's big backyard.*



WAIRARAPA

HUTT VALLEY



KĀPITI COAST



MARTINBOROUGH



EASTBOURNE



PORIRUA



## WAIRARAPA

# Wildly charming

*Wairarapa is a region full of character, where country warmth meets world-class food and wine. Wildly different experiences are close together here, where big open skies meet warm, intimate experiences. Head over the Remutaka Hill and get to know the talented locals who've put the area on the map as a top spot for wine, food, and artisan creations. Reconnect in a cosy retreat or go a little bit wild in their wide-open spaces.*



### — VILLAGE CHARM

Wairarapa's towns and villages are quaint, accessible, and just waiting to be explored. Close together but utterly unique, they're bursting with character and small enough to explore on foot or by bike. Take a day trip to discover their hidden gems – boutiques, cellar doors, markets, and pretty parks. You'll feel like a local before you know it!

### — PASSIONATE PRODUCERS

Wairarapa is full of gourmet delights and fanatical foodies. The region is famous for producing some of the world's most sought-after Pinot Noir, but they've got much more than wine. Their hands-on growers, makers, and bakers are masters of their craft – think olive oil, honey, cheese, gourmet meats, and sweet treats, too.

### — WILD CONTRASTS

Shake off the city and refresh your senses in a region that's a wee bit wild. From the rugged coast to the bush-clad Tararua Ranges, the region revels in its four seasons: rich autumn colour, snowy winter hills, blooming spring daffodils, and summer's big blue skies. Its outdoor experiences can be epic or bite-sized but are always memorable. Bike the historic **Remutaka Cycle Trail**, stroll around **Wairarapa Moana**, or visit a lighthouse and spot seals. After dark, gaze at one of New Zealand's most spectacular, star-filled skies.



| Clockwise from top / Castlepoint, Poppies Martinborough, Pūkaha National Wildlife Centre



# WAIRARAPA

## Top five THINGS TO DO



*Spectacular scenery, country charm, and great food and wine, the Wairarapa region has something for everyone.*

### 1 / CYCLE THE VINES

**Martinborough** is a quaint village in the centre of Wairarapa's thriving wine industry, and its flat landscape and wide country roads make it perfect to explore by bike. There are over 25 cellar doors plus gin distilleries and olive groves surrounding this little colonial charmer. Grab a wine map from the Martinborough i-SITE Visitor Information Centre and hire a bike, e-bike, tandem, or rickshaw from **Green Jersey Explorer Tours**.

### 2 / PREMIER SHOPPING

Get your dose of country charm in **Greytown**, a pretty town with a rich heritage of beautiful Victorian-era buildings and tree-lined streets. It's also a top shopping and food destination thanks to its independent boutiques, specialist stores, and delicious cafes and restaurants. Many of these businesses are housed in sensitively restored colonial buildings – pick up a heritage map and follow the historic walk to learn about this slice of Kiwi history.

### 3 / CHEESE & CHOC

Calling all cheese and chocolate lovers! Get your fix in Featherston at their speciality cheese store **C'est Cheese**, a haven of dairy and deli delights. When you're done, head up the road to **Schoc Chocolates** in Greytown, where chocolatier Murray Langham has more than 85 extraordinary flavours, including a homage to windy Wellington – nice and salty.

### 4 / EXPLORE THE COAST

Jaw-dropping natural scenery greets visitors who make the drive out to **Castlepoint**, east of Masterton. The iconic lighthouse, limestone reef, golden sand beach, and the imposing Castle Rock will leave you spellbound. So too will the road to **Cape Palliser**, Wairarapa's southern-most point, and home to the North Island's largest fur seal colony.

### 5 / AMAZING WILDLIFE

**Pūkaha National Wildlife Centre** is as much a national treasure as the species it strives to protect. Located 20 minutes north of Masterton, the captive breeding centre and surrounding ancient native forest is teeming with native birds such as kōkako, kākā, tūi, and kiwi, and other interesting creatures such as giant eels, tuatara and wētā.

**Find out more at [WairarapaNZ.com](http://WairarapaNZ.com)**

# 48 hours

## IN WAIRARAPA

### DAY ONE



#### AM /

First stop: cheese! **C'est Cheese** in Featherston has every type of cheese your heart desires, (and some you didn't even know you liked). Take a trip up the road to **Schoc Chocolates** in Greytown and you've got the perfect pairing of take-home treats – if they make it that far. While you're there, browse the boutiques. They've got great independent stores and stylish, friendly locals in the know.

#### LUNCH /

Nip across to Martinborough for an afternoon exploring the vines and getting to know the local makers, growers, and artisans. The best way to start? Sampling their offerings of course. Sit down for lunch at a local vineyard like **Poppies**, **Colombo Martinborough**, or **Moy Hall** for tasty local wine and delicious food.

#### PM /

It's not just wine on offer. **Olivo** has the oldest olive trees in Martinborough and produces award-winning extra virgin blends and will teach you how to taste olive oil like a professional. Enjoy dinner at **Union Square**, an award-winning modern French-inspired bistro in the **Martinborough Hotel** – a handy spot to rest your head for the night.



### DAY TWO

#### AM /

Take it easy this morning by wandering the beautiful gardens at **Longbush Cottage**. Constantly changing but always inspiring, be surrounded by the beauty of nature in the themed gardens at this quaint 19th century cottage.

#### LUNCH /

Delicious and dainty are both on the menu at **Finom Kitchen** in Carterton. Owners Kirsten Berry and Sarah Webster serve up seasonal vegetarian fare alongside exquisite cakes and sweet creations that are just as divine to look at as they are to eat.

#### PM /

The kids will be kept entertained at **Queen Elizabeth Park** in Masterton. Hitch a ride on the classic miniature train, cruise on the lake in a pedal boat, feed the ducks, or just head over to the enormous playground for hours of fun. If there's time, drive to the coast and visit **Castlepoint** – a dramatic and rugged seaside village complete with beach, lighthouse, and hills.





## HUTT VALLEY

# Adventure playground

*Just 15 minutes from Wellington city, the beautiful Hutt Valley is a gem of nature, culture, and food. Filled with incredible outdoor and wildlife experiences, there are countless trails to suit every adventurer – all teeming with birdsong and fresh, sea air. Once you've had your fill of its great outdoors, discover art, culture, shopping, and cuisine spread across the region's two cities. Get the best of both worlds in this bustling valley surrounded by river, sea and sky.*

### HIT THE TRAILS

Nestled in bush, hills, river and forest, you're never far from the great outdoors in the Hutt Valley. Home to around 3,000 hectares of parks and reserves and countless tracks for hiking, biking, and running, visitors can get every type of nature experience. Camp alongside a riverbed, swim in a sheltered bay, catch a famous seaside sunset, or head for the hills on a bike for sweeping views across the surrounding harbour and hills.

### DELICIOUS EATS

The Hutt Valley is a hub of artisan food and drink producers and is a pilgrimage for foodies far and wide. Seaside suburb Petone is home to a global offering of eateries and specialist food stores, dishing up everything from Mexican to French, Italian, and Cambodian. Venture further into the valley to meet local makers, and discover some of the region's top coffee roasters, craft beer breweries, cheese makers, and bakers – all local, fresh, and absolutely delicious.

### HISTORY HUB

A region of notable firsts, the Hutt Valley has some of Wellington's richest history. Petone was the site of the first colonial settlement in the area in 1840 and is home to historic stories, experiences, and architecture in its quaint neighbourhoods. Galleries and museums around the region celebrate contemporary art and design and provide visitors with insights into the region's innovative spirit and social, industrial and cultural past.

| Clockwise from top / Pencarrow Lighthouse, Kaitoke Regional Park, Petone, Seashore Cabaret





*An adventurer's paradise, the Hutt Valley is an excellent place to have fun, have a feast, and feel at home.*

## 1 / TAKE A GREAT RIDE

Taking you through river, bush, mountain and sea, the **Remutaka Cycle Trail** is a ride that everyone can enjoy. Starting in Petone, wind your way up the Hutt River, and weave into the Remutaka Ranges via an 1800s railway route. The full trail takes 2-3 days, but riders can pick sections to suit their ability and timing.

## 2 / GO WITH THE FLOW

White knuckles and white water await at Upper Hutt's **Wellington Rafting**. Covering 10km of river through untouched nature and native forest and bush, experience the Hutt Valley like never before. Many of their trips are fuelled by adrenalin just as much as they are racing rapids, but there are also scenic options for a slower paced tour.

## 3 / CRAFT BEER PARADISE

A one-stop shop for craft beer lovers, **Brewtown** is home to legendary local breweries, a distillery, excellent food, and endless entertainment. Formerly the Dunlop Tyre factory, Brewtown offers

visitors a fun day out to try local beers, best enjoyed in their outdoor green spaces. There's also an on-site entertainment complex, with mini golf, paintball, bowling and cart racing.

## 4 / SEE THE SEA

Cycle the flat rocky shore to **Pencarrow Head** and the 1906 lighthouse on the shoreline. You can venture up to New Zealand's first lighthouse, once home to the country's only female lighthouse keeper. You'll be rewarded with vast views over Wellington Harbour and across to the South Island.

## 5 / FOODIE FEAST

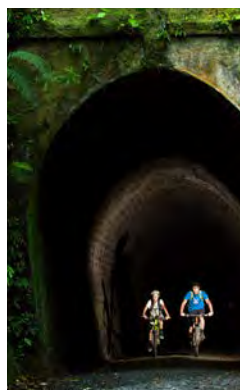
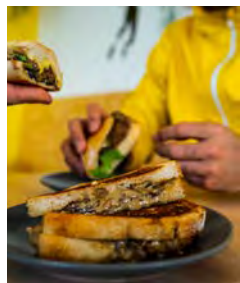
Petone's central hub, **Jackson Street**, offers visitors a world of food, art and shopping. The 800m street packs a punch for food lovers, offering more than 60 cafés, restaurants, and bars showcasing cuisine from across the globe. Work up an appetite by wandering the shops – Jackson Street offers a range of independent boutiques, art galleries, and specialty stores sure to keep you entertained for hours.

**Find out more at [HuttValleyNZ.com](https://www.huttvalleynz.com)**



# 48 hours IN HUTT VALLEY

## DAY ONE



### AM /

Start your day with coffee and cake from Upper Hutt's delicious and gorgeous café, **Cake & Kitchen**, and fuel yourself for a morning of exploration on **Main Street** – full of funky boutiques, sustainable shopping and trendy local stores.

### LUNCH /

You're going to want to fill up for an adventurous afternoon ahead, so make sure you get some extra fillings in your lunchtime sandwich from **Tricky's Sandwich Co** – made to order and always fresh.

### PM /

Hire a bike from **Wildfinder** and pedal to the **Remutaka Rail Trail**. The trail is wide and accessible, weaving through old rail tunnels, bridges, and native bush and forest on an easy climb to the summit. Finish your day with a cold one at **Brewtown**; you'll have earned it! Wellington's only craft beer village has beers on tap from five breweries and is the perfect spot for a brew in the sun.

## DAY TWO

### AM /

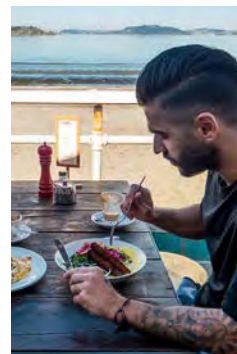
Catch the train to **Petone**, Lower Hutt's seaside suburb bursting with character, history, and delicious food and drinks. Quirky café **Seashore Cabaret** is perfectly positioned for brunch with a side of harbour views. Wander down **Jackson Street** for some of Wellington's best shopping – clothes, candles, records, or rare treasures, you'll find it all on this compact stretch of stores.

### LUNCH /

Traverse the bays and end up in **Eastbourne**, a quaint beachy village surrounded by hills, bush, and sea. On the way, stop at Days Bay for a slice of woodfired pizza at **The Pavillion**, a local favourite and made even better with a good dose of sea breeze.

### PM /

Eastbourne is stunning at a bird's eye view from **Kōwhai Street Track**. This zigzag trail winds up the hills taking in sweeping views of the harbour before heading to **Butterfly Creek**, a popular picnic spot. Finish off your day at **The Still Room**, a suburban bar and bistro with an in-house craft beer fillery, before you jump on the **East by West** ferry for a peaceful journey back to the city.



## KĀPITI COAST

# Beachside bliss

*Welcome to the Kāpiti Coast, which stretches across 40km of curved coastline from Paekākāriki to Ōtaki and whose tranquil beaches and characterful villages have long been embraced by those wanting to decompress from city life.*



### — PUT YOUR FEET UP

Life moves at a different pace on the Coast. With beaches, bays, sand, and surf, there's plenty of space to relax and recharge. Take in the atmosphere, embrace the wide-open skies and soak in the classic Kiwi bach life. Enjoy simple pleasures like beach cricket and ice cream in cones, and don't forget the long west coast sunsets.

### — A NATURE RETREAT

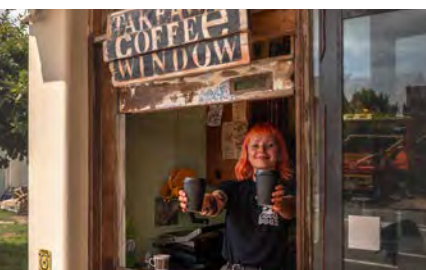
There's a world of green to explore on the Kāpiti Coast. From leafy river corridors rich in birdlife to rugged bush tracks with epic views, immerse yourself in the Coast's eco-conscious culture, with conservation and regeneration at the forefront.

### — GOOD FOOD, GREAT COFFEE

Kāpiti Coast's eateries may have a relaxed, beachy vibe but they take their food and drink seriously. Locals are passionate about great food and coffee, and they've got the awards to prove it, with incredible artisan distilleries, craft brewers, and lively local produce markets. The fresh, seasonal, and local cuisine is best enjoyed with a spectacular view — which they have in spades.

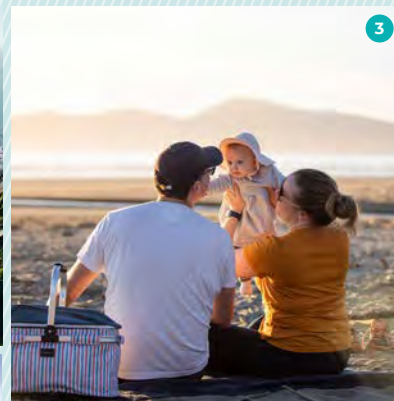
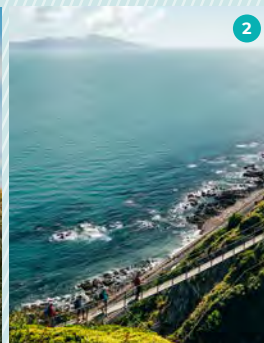
### — KIDS AT HEART

The Coast is a place with space for free range children – allowing them to roam and play in the sea air. With 49 playgrounds, splash pads, acres of parks and safe beaches, the little ones are spoilt for choice, and Mum and Dad will be equally as thrilled.



Clockwise from top / Escarpment Track,  
Queen Elizabeth Park, Raumati South, Raumati Social Club





*The Kāpiti Coast is all about spectacular vistas, stunning beaches, abundant sunshine, good food, and locally-made craft beer.*

## 1 / SCENIC ADVENTURE

Kapiti Coast's many walking, cycling and horse-riding trails and quiet roads make for a relaxing and beautiful day out. Head to the **Waikanae River Trail**, a 9.5km track winding along the river beside established willows and young native plantings with plentiful bird life. Following the river there are plenty of places to stop for a picnic or a swim and continue with the trail through the lagoons to the sea.

## 2 / SEA TO SKY

Part of the national Te Araroa Walkway, the **Escarpment Trail** is a 10km track running from Paekākāriki to Pukerua Bay. The journey takes in 1,200 steps and a swing bridge, taking around 2-3 hours to complete, and gives walkers some of the most spectacular views in Wellington.

## 3 / A DAY AT THE BEACH

You can't visit the Coast without heading to one of its many **beaches**. With 40km of coastline to choose from, you'll be spoilt for choice. Paddle in the shallows, swim in the sea, surf on patrolled

beaches, catch a fish for dinner, explore via horseback, kayak or paddleboard, watch the sunset over Kapiti Island, you can take in the sand and sea however you please.

## 4 / EXPLORE THE ISLAND

The best-kept secret on the Coast, **Kapiti Island** is a seaside adventure not to be missed. Swim, snorkel, sea kayak, and stay the night at on-site glamping accommodation just 5km off the Kāpiti coastline. There's a range of walking tracks to explore this pest-free paradise, and limited numbers mean you can always find a quiet spot to take in the serenity. Visit between November and January to see the island's hillsides ablaze with blooming rata and pōhutukawa trees, supplying a tasty feast for the hundreds of native birds that call the island home.

## 5 / COASTAL TRANQUILITY

**Ngā Manu Nature Reserve** offers visitors 14 hectares of rare coastal swamp forest, picnic-worthy lawns, abundant native flora and fauna, and easy walking trails. Visit in the evening to see our national bird in a dedicated outdoor Kiwi enclosure, part of Ngā Manu's work to help protect and replenish at-risk species of native birds and reptiles.

**Find out more at [KapitiCoastNZ.com](https://www.kapiticoastnz.com)**

# 48 hours

## IN KĀPITI COAST



### DAY ONE



#### AM /

Start your day with a swim and a scone at the **Perching Parrot** café in Paekākāriki, before you explore from the comfort of an e-bike. **E-Bikes and Mobility** offer convenient hire so you can travel without breaking a sweat – unless of course that famous coastal sun is shining. A great place to start is **Queen Elizabeth Park**, an easy 6km trail that traverses dune lands for stunning ocean views.

#### LUNCH /

For a lunch that's local as well as tasty, make sure you stop at **Sunday Cantina** in Raumati South. Their fare showcases the abundant regional produce on offer, and they've got a range of salads, snacks, burgers, and bites for a sit-down meal or lunch on the go.

#### PM /

All that fresh sea air can be exhausting, but a night at **Atahuri** should be just the tonic you need. Nestled in the dunes on Peka Peka Beach, this boutique accommodation is the ultimate in comfort and serenity. Before you settle in, explore the historic township of **Ōtaki**, with its community feel and rich cultural heritage. The cosy restaurant, **Ōtaki Kitchen** is a great spot for dinner.



### DAY TWO

#### AM /

After a leisurely start to the day, immerse yourself in nature and history at **Ngā Manu Nature Reserve**. Explore the 14 hectare reserve, wander the forest and bring a picnic for a relaxing morning. The kids will love feeding the eels, the reptile enclosures, and the feeding tour with knowledgeable staff.

#### LUNCH /

Make lunch a lengthy affair at **Long Beach Café and Tavern**, just across the road from Waikanae Beach. The food is stylish and bursting with flavour, and the rustic courtyard and free-range garden is buzzing year-round.

#### PM /

The grand finale of your coastal exploration is an epic helicopter ride with **Kapiti Heliworx**. Fly out over Kapiti Island nature reserve, and soar above the Tararua Ranges toward Mt Wainui, taking in the wild and charming Coast in all its glory.





## PORIRUA

# Harbour to hills



*Nestled between two harbours, Porirua is a welcoming and multi-cultural city with a coastal village vibe. Take to the hills for adventures of any pace, from scenic strolls to adrenalin-fuelled mountain biking adventures. If the seaside is more your scene, Porirua has it in spades, offering swimming, surfing, fishing and boating. Whatever your choice, pair it with delicious local kai (food) and you'll be living it up like a local in no time.*

### CREATIVE CULTURE

Porirua, home to Ngāti Toa and the Ka Mate haka, is rich in Māori heritage, cultural diversity and creative talent. Local galleries and museums showcase the best in contemporary Māori, Pacific Island, New Zealand, and international art. Pick up a piece of Porirua from a local artisan, or sample some kai (food) for an authentic taste of Aotearoa and the islands. Porirua's Waitangi Day and Matariki celebrations are cultural events not to be missed.

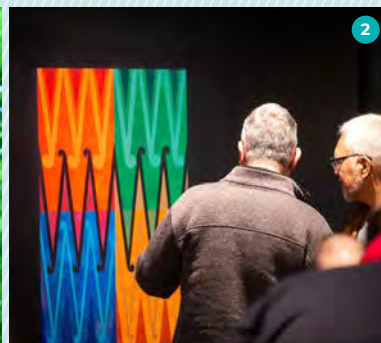
### HARBOUR CITY

With two sheltered harbours, visitors to Porirua can enjoy coastal walks, safe swimming beaches, and rocky pools perfect for snorkelling and exploring. Nature lovers can enjoy bird spotting on meandering pathways through nature reserves, or kick back and soak up the sun at the beach. Bring some fish and chips and watch the sunset for a quintessential Kiwi experience.

### ADVENTURE FOR ALL AGES

Whatever level of thrill you're looking for, Porirua offers adventure for all ages. Hit the harbour on a paddleboard, surfboard, boat or hoverboard, or head for the hills and race down a thrilling cycle trail. Little ones can enjoy mini-golf, go-karting and indoor amusement playgrounds where they can bounce, climb, and explore.

Clockwise from top / Boat sheds at Paremata, Local Authority, Pukerua Bay, Waitangi Day at Porirua, Te Ara a Rangitūhi



*With culture, nature and a bit of adventure, Porirua is a great place to spend the day exploring and enjoying yourself. Bring the family and pick your pace, from seaside to hilltop and everywhere in between.*

## 1 / KING OF THE MOUNTAIN

Get your bearings at the top of **Rangituhi/Colonial Knob**, Porirua's highest peak. Walk, run, or cycle your way to the 468m-high summit offering sweeping vistas across the region. Head up on a clear day to glimpse the Kaikōura Ranges in the south and Mt Taranaki in the north.

## 2 / ARTISTIC FLAIR

**Pātaka Art + Museum** is a great place to get a taste of the diversity Porirua has on offer. A treasure trove of local art and culture, Pātaka has a regularly changing exhibition programme of contemporary Māori, Pacific, New Zealand, and international art.

## 3 / THE MEANDERING PATH

Grab the family for a day out wandering and exploring a meandering seaside walkway. Start at **Camborne Walkway**, which takes you along the shores of Pāuatahanui Inlet and the iconic colourful

boatsheds. From there, explore native salt marshes and wetlands along **Te Ara Piko** pathway, and see how many native birds you can spot at the **Pāuatahanui Wildlife Reserve**, with their purpose-built bird-viewing hides.

## 4 / GET THE HEART RACING

Thrill-seekers will love Porirua's **Adrenalin Forest**, a high-ropes course and adventure park amid towering pine trees. Tackle the six levels for increasing challenges of height, skill, and courage as you climb, jump, and swing your way around the course, rising up to 30m off the ground.

## 5 / UNTOUCHED NATURE

Blow off the cobwebs at **Whitireia Park**, a coastal headland with dramatic views of Mana Island, Porirua Harbour, and through to the South Island. Encompassing farmland and coast, there's plenty of activities on offer — hike, bike, rock climb, horse ride, swim, or go fishing. You'll never get bored in this adventurer's playground.

**Find out more at [PoriruaNZ.com](https://www.porirua.govt.nz)**



# 48 hours IN PORIRUA

## DAY ONE



### AM /

Start the day with some history and mystery at the **New Zealand Police Museum**, with interactive crime-solving puzzles and dress-ups for the kids. If that wasn't enough excitement for one morning, take the little ones to play at **Aotea Lagoon** - there's a splash pad and playground to keep them busy, or take in the beauty of the rose gardens for a slower pace.



### LUNCH /

You've worked up an appetite by now, but luckily **Gear Eatery and Bar** has got the goods. Set in an historic homestead nestled among rose gardens and flowering shrubs, enjoy tasty kai (food) and beautiful views across the harbour.



### PM /

Get waterside by walking the **Pāuatahanui Inlet**, along **Camborne Walkway**, **Te Ara Piko**, and the **Pāuatahanui Wildlife Reserve** for your daily dose of nature, water, and bird watching. Finish the day up in Plimmerton with a Kiwi classic - fish and chips on the beach. If you're feeling like something a bit more exotic, head to **Topor Bistro** for Polish cuisine, vodka, and beer.

## DAY TWO

### AM /

Feel inspired at **Pātaka Art + Musuem**, a cultural hub of Māori and Pacific art and history. The kids will love the interactive kids zone, where they can learn about Porirua Harbour and the abundant wildlife that calls the area home. Grab a souvenir from the gallery gift shop, where you can find books, jewellery, ceramics, and prints for the art-lover in your life.



### LUNCH /

Have your fill at **Get Fixed Bicycle Café** right on the water's edge, a tasty and sustainable spot for lunch with plant-based specialties and kombucha on tap. While you're there, browse neighbouring **Blue Bell Club** for beautifully vibrant Pacific cushions, art, crafts and clothing, and stroll the harbourside pathway to spot local waka ama teams training.



### PM /

Head to the hills for a hike or bike in the afternoon. Take your pick from coastal headlands at **Whitireia Park** or climb to the summit of **Rangituhi/Colonial Knob** - either way you'll be rewarded with breath-taking views. Make a memory that will last a lifetime with the perfect selfie at the beach - the iconic **Titahi Bay boatsheds** are the perfect backdrop.



# WellingtonNZ

CITY PASS



## SAVE UP TO 25%

AT SOME OF WELLINGTON'S  
MOST POPULAR ATTRACTIONS

The pass includes a return trip on the iconic Wellington Cable Car, admission to your choice of two attractions - Zealandia Te Māra a Tāne, Space Place, Wellington Zoo or Museum of New Zealand Te Papa Tongarewa - and other great discounts too.

### PICK UP YOUR PASS FROM:

Wellington i-SITE Visitor Information Centre,  
Wellington Cable Car, Wellington Zoo and Zealandia.

### FIND OUR MORE AT

**WellingtonNZ.com/CityPass**

*Conditions apply.*



CLASSIC  
NEW ZEALAND  
WINE  
TRAIL



THREE OF NEW ZEALAND'S MAJOR WINE  
PRODUCING REGIONS, A CAPITAL CITY, RURAL  
TOWNS AND COASTAL WATERWAYS COMBINE TO  
CREATE THE CLASSIC NEW ZEALAND WINE TRAIL.



Taste your way through Hawke's Bay, Wairarapa,  
Wellington and Marlborough - a journey that  
takes you through regions accounting for more  
than 80% of New Zealand's wine production.



[WWW.CLASSICWINETRAIL.CO.NZ](http://WWW.CLASSICWINETRAIL.CO.NZ)



# Useful Information



## PUBLIC HOLIDAYS

For a full list of New Zealand public holidays see [govt.nz](http://govt.nz). Please note that many restaurants and retail stores are closed on Christmas Day, Good Friday and the morning of ANZAC Day.



## CBDFREE WI-FI

Wellington City Council offers free wifi at all of their facilities and libraries around the city - look for the network '**WellyWifi**'.



## BANKS AND ATMS

Banking hours in Wellington are generally weekdays 9am - 4:30pm, with some open Saturdays. Foreign exchange bureaux can be found at most banks and 24-hour ATMs are located around the city, including Courtenay Place, Lambton Quay, Willis Street and Cuba Street.



## POSTAL SERVICES

Check out [nzpost.co.nz](http://nzpost.co.nz) for information on where to buy postage.



## EMBASSIES

A full list of international embassies based in New Zealand can be found at [mfat.govt.nz](http://mfat.govt.nz)



## COVID-19

For the latest information on COVID-19 (coronavirus) and related travel updates, visit [covid19.govt.nz](http://covid19.govt.nz)



## EMERGENCIES

For fire, police and ambulance dial **111** in emergencies. Call **105** to report incidents that don't need urgent police assistance.

## HOSPITALS

### CITY

After Hours Medical Centre

- A** Adelaide Road, Newtown
- P** +64 4 384 4944

Wellington Hospital

- A** Riddiford Street, Newtown
- P** +64 4 385 5999

### HUTT VALLEY

Hutt Hospital

- A** High Street, Lower Hutt
- P** +64 4 566 6999

### PORIRUA

Kenepuru Hospital

- A** Hospital Drive, Kenepuru
- P** +64 4 385 5999



## SITE

## VISITOR INFORMATION CENTRES AROUND THE REGION

### WELLINGTON i-SITE VISITOR INFORMATION CENTRE

Wellington i-SITE Visitor Information Centre is your first stop for travel advice, tour bookings, activities and accommodation in Wellington. They specialise in travel arrangements for all New Zealand destinations and better still, their services are free.



- A** 111 Wakefield Street, Wellington
- P** +64 4 802 4860
- E** [bookings@WellingtonNZ.com](mailto:bookings@WellingtonNZ.com)
- W** [WellingtonNZ.com](http://WellingtonNZ.com)

### REGIONAL i-SITE VISITOR INFORMATION CENTRES

Wherever you are in the Wellington region, you're never far away from the expertise and advice of an i-SITE Visitor Information Centre.

#### Martinborough i-SITE Visitor Information Centre

- A** The Square, Martinborough
- P** +64 6 306 5010
- E** [martinborough@wairarapanz.com](mailto:martinborough@wairarapanz.com)
- W** [wairarapanz.com](http://wairarapanz.com)

#### Masterton i-SITE Visitor Information Centre

- A** Cnr Dixon & Bruce Streets
- P** +64 6 370 0900
- E** [info@wairarapanz.com](mailto:info@wairarapanz.com)
- W** [wairarapanz.com](http://wairarapanz.com)

#### Upper Hutt i-SITE Visitor Information Centre

- A** 836 Fergusson Drive, Upper Hutt
- P** +64 4 527 2168
- E** [info@expressions.org.nz](mailto:info@expressions.org.nz)
- W** [huttvalleynz.com](http://huttvalleynz.com)

A panoramic view of Wellington, New Zealand, at sunset. The city is nestled in a valley, with the harbor and distant hills visible under a warm, orange-hued sky. In the foreground, there are lush green ferns and a white railing, possibly part of a walkway or bridge.

## STAY IN TOUCH



WellingtonNZ.com



WellingtonNZ



@WellingtonNZ



@Wellington\_NZ



@WellingtonNZ



cbdfree - free Wi-Fi network



新浪微博: 新西兰惠灵顿旅游局